

Max Exterior Range of Decors

GIVE YOUR BUILDINGS CHARACTER

exterior

for
people
who
create



3	Products
9	Sustainability and Environment
10	Max Exterior Range of Decors
11	Update 2019
12	Authentic
14	Individualdecor
16	Sky
18	Finish
19	Metallic
20	Colour
30	Nature
38	Material
46	Decor overview

Create New Worlds

Shape, colour and material all convey emotions, tell stories and inspire new ideas. And they all lend our buildings character. Therefore, with this brochure we want provide you an overview of the creative and technical components of the Max Compact Exterior panels for outdoor use.

If you have any questions that are not answered in this brochure, please contact our sales department or application engineering department at support@fundermax.biz. We are happy to help!

THE FIGURES IN OUR BROCHURES ARE SCHEMATIC REPRESENTATIONS AND ARE NOT TO SCALE.

Exclusion of Liability

The information made available in this document are exclusively for purposes of general information. Not all of the systems mentioned and shown in this document are appropriate or suitable for all areas of application. All customers and third parties are obligated to inform themselves thoroughly about FunderMax products, including their suitability for certain purposes. We explicitly recommend that you and other users of this document seek out independent expert advice on adherence to local planning and use requirements, applicable laws, regulations, standards, guidelines and testing standards. FunderMax accepts no liability in connection with the use of this document.

COPYRIGHT

ALL TEXTS, PHOTOGRAPHS, GRAPHICS, AND AUDIO AND VIDEO FILES ARE PROTECTED BY COPYRIGHT LAW AS WELL AS BY FURTHER INTELLECTUAL PROPERTY LAWS AND MAY NOT BE DUPLICATED, ALTERED OR USED ON OTHER WEBSITES FOR PURPOSES OF BUSINESS, ETC.

What Max Compact Exterior Can Do

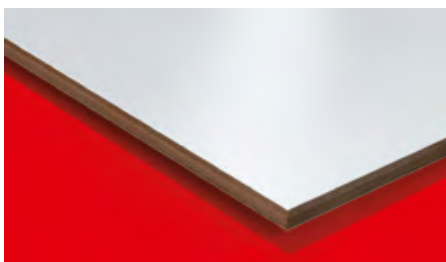
Max Compact Exterior panels are duromer high-pressure laminates (HPL) in accordance with EN 438-6 Type EDF that are produced in lamination presses under great pressure and high temperature. Double-hardened acrylic PUR resins provide extremely effective weather protection that is particularly suitable for longlasting balconies and façade claddings.



PROPERTIES*:

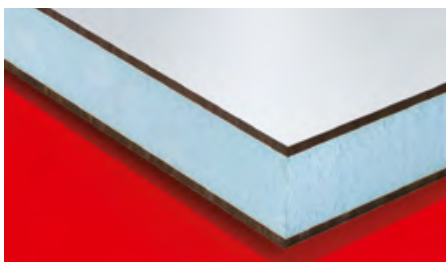
- Weather resistant to EN ISO 4892-2
- Lightfast acc. to EN ISO 4892-3
- Double hardened
- Scratch resistant
- Solvent resistant
- Hail resistant
- Easy to clean
- Impact resistant EN ISO 178
- Suitable for all exterior applications
- Decorative
- Bending resistant EN ISO 178
- Frost and heat resistant
- Constant temperature load
-80 °C to 80 °C
- Easy to install

*STANDARD- AND ACTUAL-VALUES YOU WILL FIND
ON OUR WEBSITE WWW.FUNDERMAX.AT.



Max Compact Exterior F-Quality

As a standard, Max Compact Exterior panels come printed on both sides. The core is flame-retardant and the surface is light-fast. Thanks to the double-hardened resin, it is also extremely weather resistant. (Fire Test EN 13501-1, B-s2,d0)



Sandwich-Elements

The Max Compact Exterior panels in F-Quality also come polished on just one side for use in sandwich elements.



Processing (Compact Elements)

FunderMax offers CNC controlled processing and panel cutting. With state-of-the-art devices, it is possible to produce everything: from simple cutouts for mounting the façade panels, to intricate milling for balcony elements. We can make just about anything you can dream up.



Professional Consulting

With our services you can use our products even more effectively. For example, take advantage of our free architect consulting and comprehensive system solutions. The same is of course also true if you have any questions about the content of this brochure or the designs and technology.

Max Compact Exterior F-Quality

Max Compact Exterior is a high-quality construction product which is used especially for long-lasting balcony and façade claddings. Max Compact Exterior panels are duromer high-pressure laminates (HPL) in accordance with EN 438-6 Type EDF with extremely effective weather protection. This weather protection consists of doublehardened acrylic polyurethane resins. They are produced in lamination presses under great pressure and at high temperatures. Max Compact Exterior panels are, of course, labelled with the CE-Mark necessary for their use in building applications.

SURFACES

NT	
NH (Hexa)/NT	(format 4100 x 1854 mm only)
NG* (Gloss)/NG (Gloss)	(format 4100 x 1300 mm only)
NY (SKY)/NT	(format 4100 x 1300 mm only, thicknesses 6 mm, 8 mm, limited decor palette)

FORMATS (aprox)

2800 x 1300 = 3.64 m ²
110.24" x 51.18" = 39.18 sf
4100 x 1300 = 5.33 m ²
161.42" x 51.18" = 57.37 sf
2800 x 1854 = 5.19 m ²
110.24" x 72.99" = 55.87 sf
4100 x 1854 = 7.60 m ²
161.42" x 72.99" = 81.81 sf

*TO GET A PERFECT DESIGN OF THE FAÇADE CLADDING WITH NG SURFACE IT IS RECOMMENDED TO GLUE THE PANELS ON AN ALUMINIUM-SUBCONSTRUCTION. SUBCONSTRUCTION LIKE WOOD DO NOT HAVE THE RIGHT PROPERTIES TO AVOID A WAVY APPEARANCE OF THE CLADDING.

CORE

F-Quality, flame-retardant, colour brown

THICKNESSES

Panels with double-sided decor:

Thicknesses	Tolerances (EN 438-6, 5.3)
2.0 - 2.9 mm	± 0.2 mm
3.0 - 4.9 mm	± 0.3 mm
5.0 - 7.9 mm	± 0.4 mm
8.0 - 11.9 mm	± 0.5 mm
12.0 - 13.0 mm	± 0.6 mm

Panels with the Hexa surface:

Thicknesses	Tolerances (EN 438-6, 5.3)
6.0 - 7.9 mm	± 0.4 mm
8.0 - 11.9 mm	± 0.5 mm
12.0 - 15.9 mm	± 0.6 mm
16.0 - 20.0 mm	± 0.7 mm

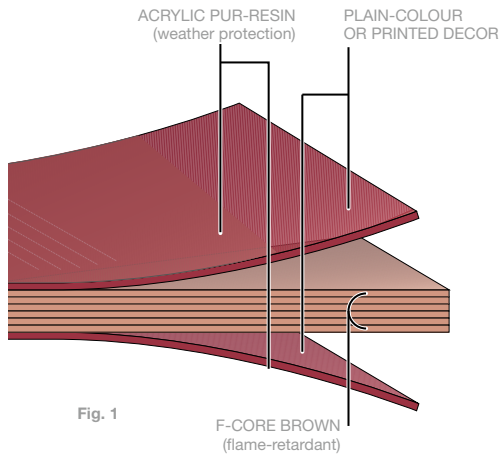
Panels with sanded-reverse side:

For symmetrically structured sandwich elements.

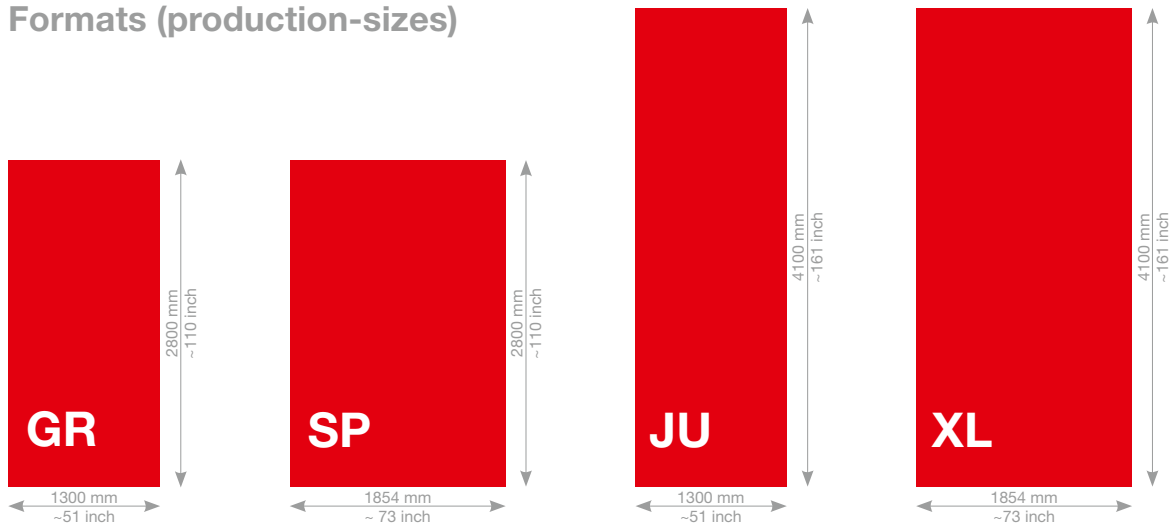
Thicknesses	Tolerances (EN 438-6, 5.3)
2.0 - 2.9 mm	± 0.2 mm
3.0 - 4.0 mm	± 0.3 mm

In order to be able to design the inner sides of balconies with a uniformly light look, it is also possible to produce Max Compact Exterior panels with a white (rear) side using decor 0890 NT – Balcony white. As a result of the differing decor structure, the fastening spacings given in our Technical Information brochures should be reduced by about 15 %.

STRUCTURE MAX COMPACT EXTERIOR PANEL



Formats (production-sizes)



TOLERANCES +10 - 0 mm (EN 438-6, 5.3)

PANEL FORMATS ARE PRODUCTION FORMATS. IF EXACT DIMENSIONS AND ANGLES ARE NECESSARY, WE RECOMMEND AN ALL-SIDED BLANK.
DEPENDING ON THE METHOD OF TRIMMING, NET SIZE IS REDUCED BY CA. 10 mm.

PHYSICAL DATA

PROPERTIES	TEST METHOD	ASSESSMENT	STANDARD VALUE ¹⁾	TYPICAL VALUE ²⁾
LIGHT-FASTNESS AND WEATHER RESISTANCE				
Artificial weathering	EN 438-2:2016, clause 29, 3000 h	EN 20105-A02 grey scale	Contrast: ≥ 3 Appearance: ≥ 4	Contrast: 4-5 Appearance: 5
Resistance to UV light	EN 438-2:2016, clause 28	EN 20105-A02 grey scale	Contrast: ≥ 3 Appearance: ≥ 4	Contrast: 4-5 Appearance: 5
MECHANICAL PROPERTIES				
Apparent density	DIN 52328 / EN ISO 1183	g/cm³	≥ 1.35	1.44
Flexural strength	EN ISO 178	MPa	≥ 80	Width: 105 Length: 170
Elasticity modulus	EN ISO 178	MPa	≥ 9,000	Width: 11,000 Length: 16,000
Tensile strength	EN ISO 527-2	MPa	-	Width: 95 Length: 140
Resistance to impact with a large diameter ball	EN 438-2:2016, clause 21	mm	≤ 10	5 - 6
THERMAL PROPERTIES				
Resistance to wet condition	EN 438-2:2016, clause 15	%	Mass increase ≤ 8	2
Dimensional stability at elevated temperatures	EN 438-2:2016, clause 17	%	Length: ≤ 0.30 Width: ≤ 0.60	Length: 0.08 Width: 0.16
Coefficient of thermal expansion	DIN 52328	1/K		18 x 10 ⁻⁶
Thermal conductivity		W/mK		0.3
Water vapour diffusion resistance				ca. 17.200 μ
FIRE BEHAVIOUR				
Europe	EN 13501-1	MA39-VFA Vienna	Euroclass B-s2, d0 for 6 - 13 mm**	
Fire behaviour of facades in Austria	ÖNORM B 3800-5	MA39-VFA Vienna	Approved thicknesses 8 – 13 mm	
Switzerland	EN 13501-1	MA39-VFA Vienna	Euroclass B-s2, d0 for 6 - 13 mm**	
France	NFP 92501	LNE	M1 for 2 - 10 mm	
Spain	UNE 23727-90	LICOF	M1 for 6 - 10 mm	
PERMITS				
Facade permit Germany		Institut für Bautechnik Berlin	6, 8, 10 mm, Approval-No. Z-10.3-712	
ETB guidelines for building components which safeguard against falls, June 1985. Balcony railings.		TU Hannover	Passed (depending on building regulation and railing construction 6, 8 or 10 or 13 mm panel thickness)	
Avis technique Frankreich		CSTB	6, 8, 10 and 13 mm, wood- and metal subconstruction Avis Technique n° 2/16-1749 Avis Technique n° 2/14-1623 Avis Technique n° 2.2/13-1565*V1 Avis Technique n° 2/16-1716 Avis Technique n° 2/16-1753 Avis Technique n° 2.2/12-1505*V2	
Winmark UK		Wintech	A10114	

Table 1

FOR THE SURFACE NT APPLIES A GLOSS DEGREE TOLERANCE OF +/- 5 GE MEASURED AT 60°. THE TOLERANCES INFORMATION SHEET (VERSION 2017-1-16) FROM THE ÖFHF (WWW.OEFHF.AT) SHALL APPLY WITH REGARD TO COLOR TOLERANCE

*DECOR AUTN: ARTIFICIAL WEATHERING EN ISO 4892-2: 1500H; ASSESSMENT ACCORDING GREYSCALE EN 20105-A02: 2

*DECOR INDIVIDUALDECOR: ARTIFICIAL WEATHERING EN ISO 4892-2: 3000H; ASSESSMENT ACCORDING GREYSCALE EN 20105-A02: 3

1) ACCORDING TO EN 438-6

2) TYPICAL VALUES RESULT FROM INTERNAL QUALITY TESTS. TYPICAL VALUES ARE ONLY SHOWN AS EXAMPLES AND CAN'T BE USED FOR ANY LIABILITY ON THE PART OF FUNDERMAX (NO PROMISED GUARANTEED VALUES). FUNDERMAX ONLY GUARANTEES COMPLIANCE WITH THE STANDARD VALUES.

ALL THE RESPECTIVE CURRENT CERTIFICATES AND APPROVALS ARE AVAILABLE IN THE DOWNLOAD SECTION AT WWW.FUNDERMAX.AT.

PLEASE OBSERVE ALL VALID BUILDING REGULATIONS. WE WILL ASSUME NO RESPONSIBILITY IN THIS REGARD.

PLEASE CHECK WHETHER YOUR CONSTRUCTION PROJECT MEETS THE REQUIREMENTS FOR THE EFFECTIVE RESTRICTION OF FIRE PROPAGATION (E.G. AT: OIB RL 2, DE SAMPLE MANAGEMENT REGULATIONS FOR TECHNICAL BUILDING REGULATIONS MVV TB,...). THIS BROCHURE IS INTENDED FOR PROFESSIONALS WHO ARE FAMILIAR WITH THE RELEVANT STANDARDS, TECHNICAL REGULATIONS, LEGAL REQUIREMENTS AND RELEVANT GUIDELINES FOR BUILDING PRODUCTS. THESE GUIDELINES HAVE BEEN PREPARED WITH GREAT CARE, BUT WE WOULD LIKE TO POINT OUT THAT THE RESPONSIBILITY FOR THE CORRECT PLANNING ALWAYS LIES WITH THE PLANNER AND THE RESPONSIBILITY FOR CORRECT INSTALLATION ALWAYS LIES WITH THE INSTALLER.

**EXCEPTION IS PODIO-BALCONY FLOOR PANEL; EUROCLASS B-s2,d0 FOR 6 - 20 MM

Resource and Environmentally Friendly Facade Panels

We are specialists in the processing of renewable raw materials – and have been for over 100 years. Our production cycles are closed, production waste is either recycled back into the production process or used to generate energy in our green energy district heating plants. This works so well, that today as a private company we provide district heating to over 8,500 households.

QUALITY MANAGEMENT SYSTEMS

FunderMax has oriented its production facilities and processes on internationally recognized standards such as ISO 9001, ISO 14001, ISO 5001 and ISO 45001. This fact gives all customers the assurance that they have in their hands a high-quality construction product. And in its procurement of raw materials and intermediate products, FunderMax orients itself on up-to-date standards such as FSC® and PEFC*.



*PLEASE FIND FURTHER INFORMATION AT
WWW.FUNDERMAX.AT.

SUSTAINABLE PRODUCTION

Max Compact Exterior is made from natural fibre panels – around 65%, by weight – consisting largely of wood that has been processed into “kraft papers”. This wood is a by-product of sawn lumber production or of sawmills. We source these raw materials from vendors certified according to the standards FSC® or PEFC. These standards ensure that the wood is produced in compliance with internationally applicable rules for sustainable forestry.

The kraft papers are impregnated with synthetic resins in impregnation facilities, dried, and pressed into durable, moisture-resistant panels under high pressure and heat. These panels do not contain organic halogen (or chlorine, fluorine, bromine, etc.) compounds such as are found in greenhouse gases or PVC. They contain neither asbestos nor wood protection agents (fungicides, pesticides, etc.) and are free of sulphur, mercury and cadmium.

The exhaust air removed from the drying process is treated using a process of regenerative thermal oxidation, with the resulting heat being fed back into said drying process. For its installation of this efficient exhaust air treatment, FunderMax was awarded the “Klima:aktiv” award for best practices by the Austrian Energy Agency and the Austrian Federal Ministry of the Environment. This avoids CO₂ emissions of ca. 10,000 tons annually at the production site.

WASTE DISPOSAL

Chips and shavings produced by processing (cutting and milling) are not hazardous to human health. This also means that waste can even be disposed of thermally without the emission of environmental toxins such as hydrochloric acid, organic chlorine compounds or dioxins, assuming modern heating systems. At appropriately high temperatures, and assuming both sufficiently long retention of the combustion gas in the combustion space and a sufficient oxygen supply, Max Compact Exterior decomposes into carbon dioxide, nitrogen, water and ash. The energy emitted via this process can be put to use. Disposal in properly managed commercial waste disposal sites is unproblematic. As a matter of principle, country-specific laws and regulations with regard to disposal must be adhered to.

Architecture Begins in the Mind

It all starts with an idea. Then the first pictures. Many questions arise. What is possible? Does the form follow the function? What colours and materials speak the right language? And to what degree can creativity be the benchmark?

Whatever form your imagination takes, the new Exterior Range of Decors from FunderMax opens up a world of innovative designs with which you can give your buildings a very unique character.

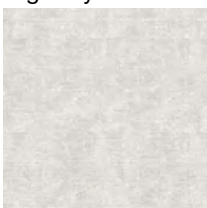


Update 2019

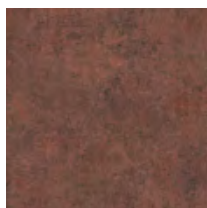
DUE TO THE PRINTING PROCESS, THE ORIGINAL PATTERNS MAY DIFFER FROM THE IMAGES IN THIS BROCHURE.

Structures in unique intensity: From geometric elements to hybrid decors to flowing marble effects and textile dynamics – with six fascinating decor creations in urban and earthy tones, FunderMax reinterprets material. Experience extraordinary designs that create a powerful excitement, especially in the interplay with matt and glossy surfaces.

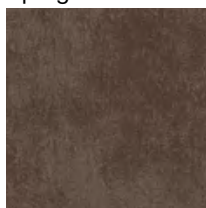
0602
Highway



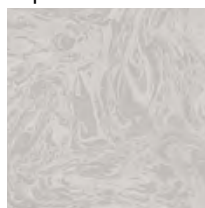
0603
Ardens



0604
Spargo



0780
Aqua

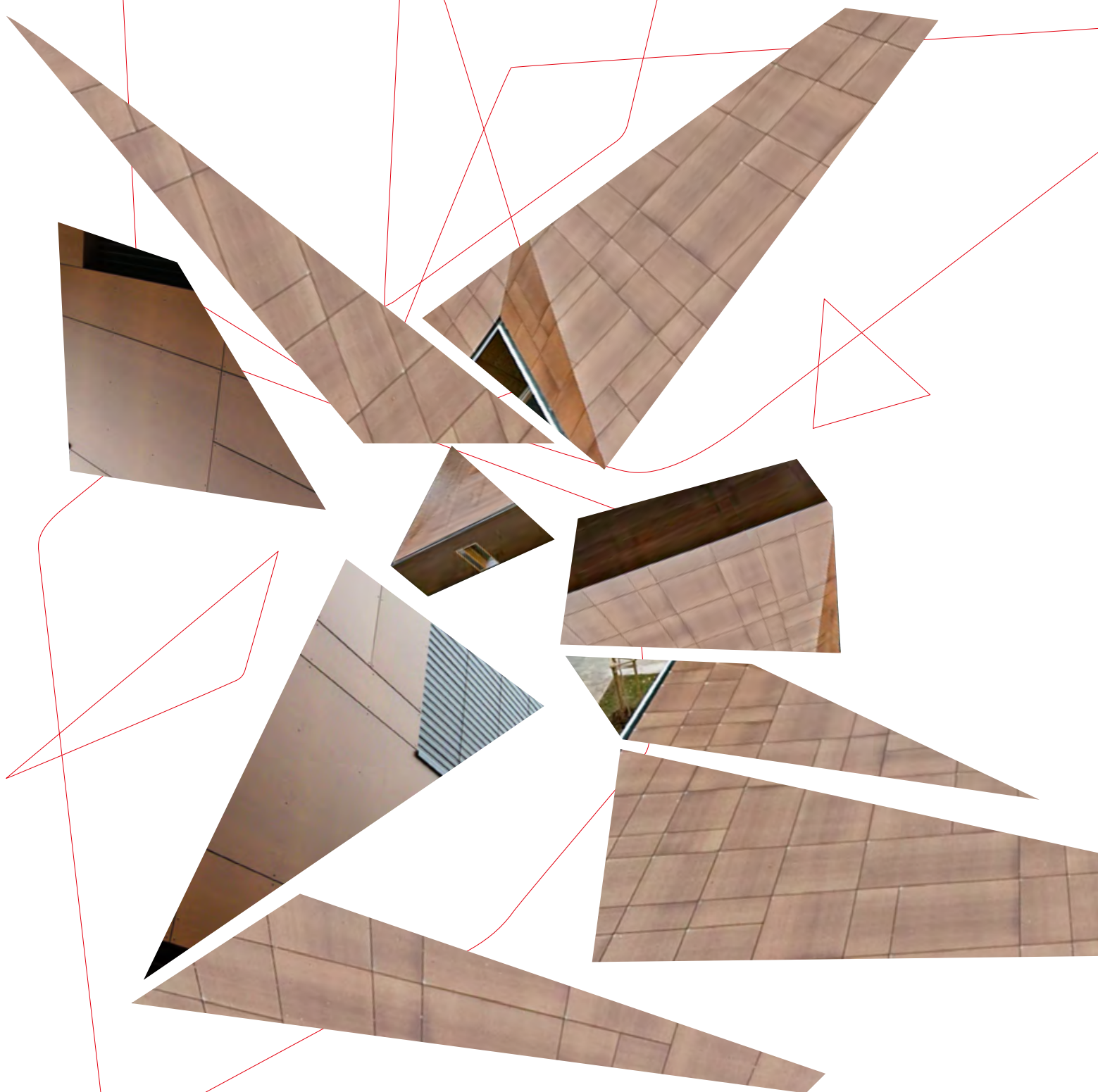


0781
Kontra



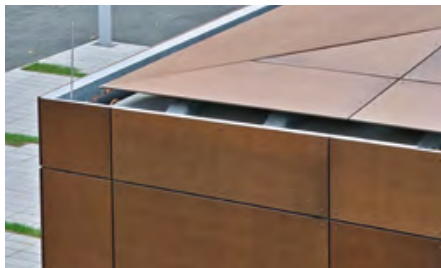
0782
Petroleum



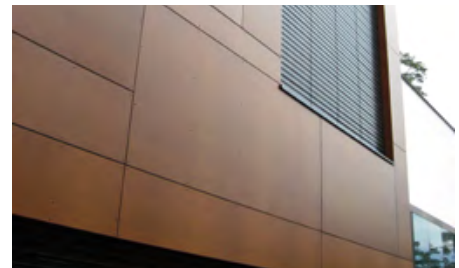


Authentic Natura

The power of nature forms these highly individual looks: its unparalleled structure gives Authentic Natura an exceptionally natural appearance. Combined with the lively decor structure, this look makes every single panel a unique item.



Civic centre Ginsheim-Gustavsburg, Germany Winner of the “Deutsche Fassadenpreis” 2011. Conceived by Hille Architekten, photographed by Horst Goebel.



Fire station Saltaus, Italy Monolithic design, surrounded by nature. Projected by architects Menz + Gritsch.

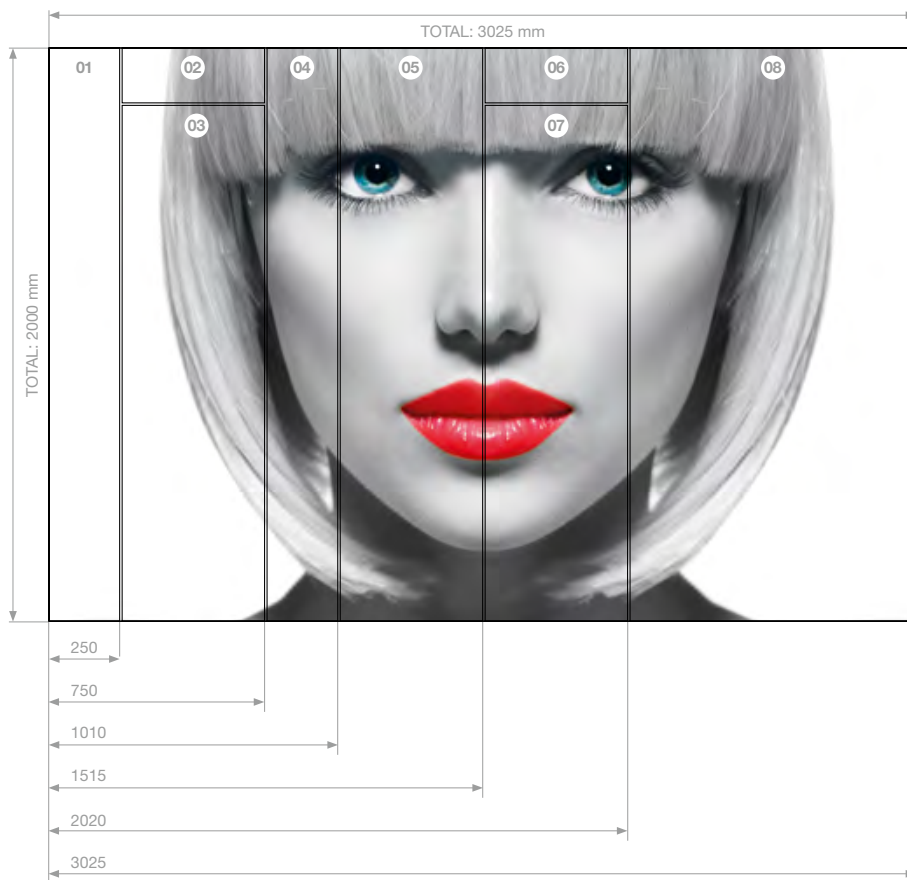


Individualdecor

If you can think it, we can print it. Make your imagination into individual, large-sized decor concepts. With various formats and motifs spanning over multiple formats, your fantasy becomes reality. Give your buildings character with truly unique designs.

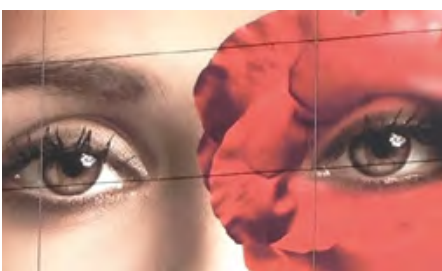
As a small inspirational source, we present to you a few application examples on next page. FunderMax Individualdecor has made all of them possible.

Find all information about FunderMax Individualdecor on www.individualdecor.com

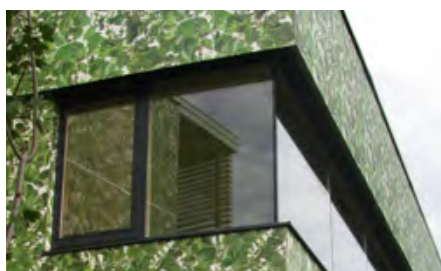


Ideas with Form

With individual designs from FunderMax, you have the freedom to provide facades, balconies and outdoor-applications with creative and completely unique designs. Your design can be printed on single panels, or as in the image below, across several panels. Ideal for large designs and special visual effects.



Baumit Sales Location, Austria
Impressive facade with a custom design from the Baumit advertising line. Design and photos: Baumit

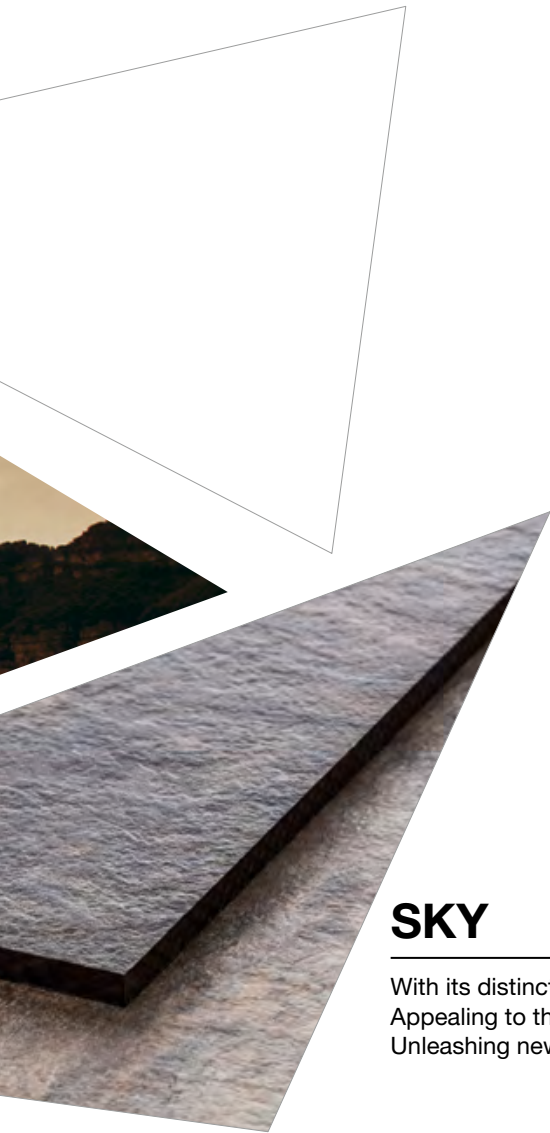


Haus der Generationen, Österreich
Treetop design for smooth transitions between home and environment. Designed by Gerhard Mitterberger.



Clientis Park, Switzerland Cubic headquarters with mosaic design and the highest energy standard. Concept by Architektengemeinschaft 4 and Atelier 47.





SKY

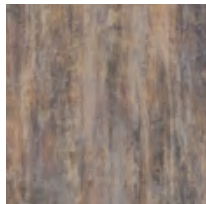
DUE TO THE PRINTING PROCESS, THE ORIGINAL PATTERNS MAY DIFFER FROM THE IMAGES IN THIS BROCHURE.

With its distinctive gloss and matt facets, Sky opens up a world of possibilities. Appealing to the eye, and impressive to touch, it is full of depth and character. Unleashing new potential, especially when re-creating stone or concrete finishes.

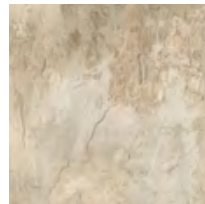
0394
Moonwalk



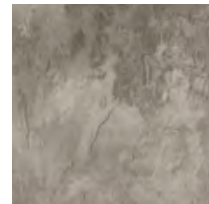
0344
Riverside



0496
Colosseum



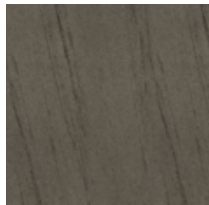
0497
Stonehenge



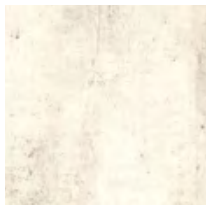
0421
Venus



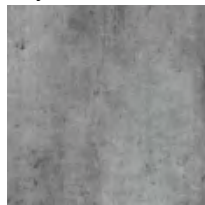
0406
Rockstar



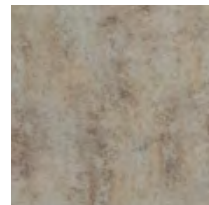
0426
Loft



0427
Skyline



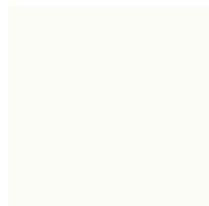
0793
Patina Tin



0794
Patina Bronze



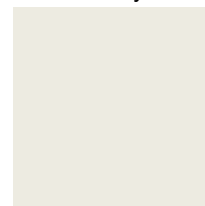
0085
White



0091
Starlight



0742
Pebble Grey



The curtain rises. Awaiting behind it are shimmering colours, expressive textures and millions of possible combinations. Tap into this source of inspiration and lend your buildings an unmistakable character.

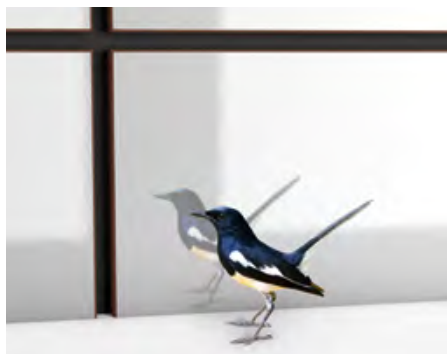
FINISH

Our finishes are all weatherproof, optimally lightfast, highly durable, and combinable with almost every FunderMax decor.



NT

The silk-matte look with a feel of fine hammer embossed finish.



NG

The glossy high-class touch that enhances any decor.



NH

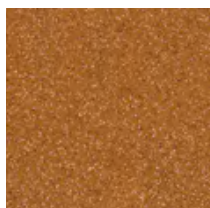
Our surface with the specially printed hexagon pattern – slip-free and ideal for that special emphasis.



metallic

Metallic additionally gives your decors a timeless gleam. This is made possible by combining a transparent overlay with metallic flakes and a plaincoloured decor. If you're interested in other Metallic combinations, please get in touch with us.

5032 + GLITTER
Cinnamon + G



0080 + GLITTER
Black + G



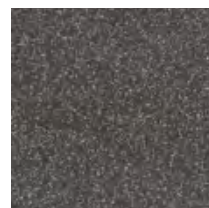
0768 + GLITTER
Sparrow + G



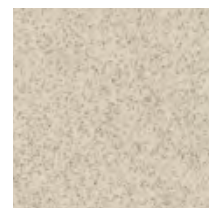
0056 + GLITTER
Atlantis + G

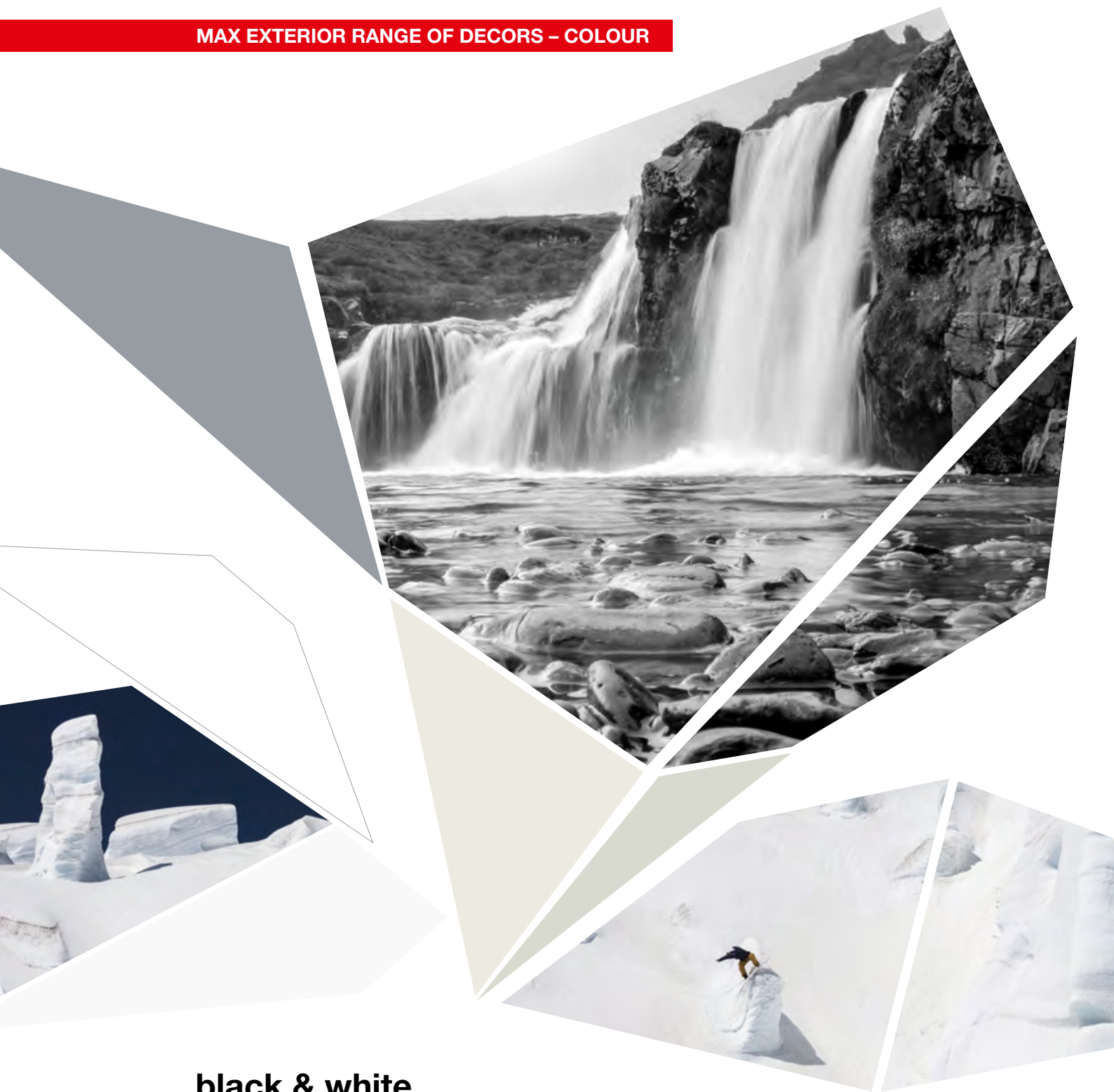


0077 + GLITTER
Charcoal + G



0066 + GLITTER
Sand + G





black & white

The eternal tension between light and shade – a daily presence, a continuous novelty. This much elegance is combinable with every other of our decors. Give your buildings maximum appeal through contrast.

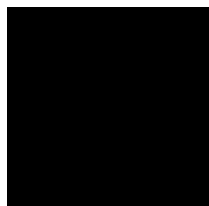
0091
Starlight



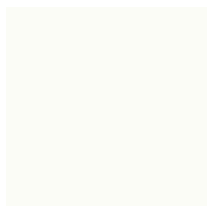
0753
Cool Grey Medium



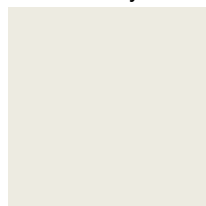
0080
Black



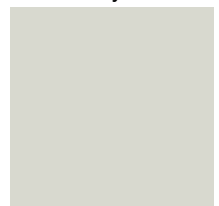
0085
White



0742
Pebble Grey



0741
Birch Grey





0074
Pastel Grey



0747
Medium Grey



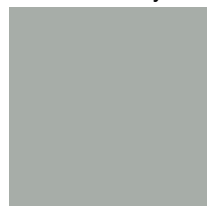
0075
Dark Grey



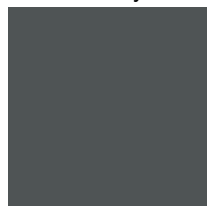
0077
Charcoal



0776
Concrete Grey



0070
Carbon Grey





neon

Fascinating optical intensity. With an all-new process, Max Exterior panels can now be produced with even more vibrant colours. Give your buildings incredible brilliance.

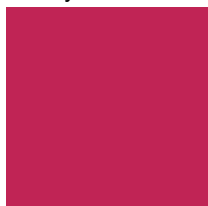
6010
Electric



6020
Satsuma



6030
Candy



6031
Berry



6040
Grape



6050
Pool





yellow

The last glimmering streak of a sunset. Jasmine flowers delicately glowing in the backlight. Give your buildings freshening colour shades.

0687
Maize



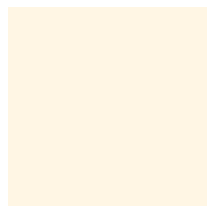
0647
Golden Yellow



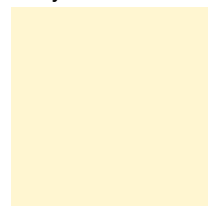
0736
Saffron



0851
Winter White



0065
Ivory



0654
Jasmin





red

The lush gloss of fully ripe cherries. The soft play of colours in an opened rose blossom. Give your buildings deeply felt passion.

0674
Mars Red



0689
Dark Red



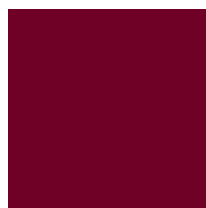
3003
Rubinus Red



0691
Purple



0680
Wine Red



3007
Black Red





blue

The mysterious depth of the night sky over the city. Seawater glistening in a thousand different colour facets. Give your buildings fantastical inspiration.

0717
Atlantic



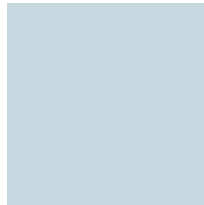
0237
Gentian Blue



0702
Night Blue



0706
Glacier Blue

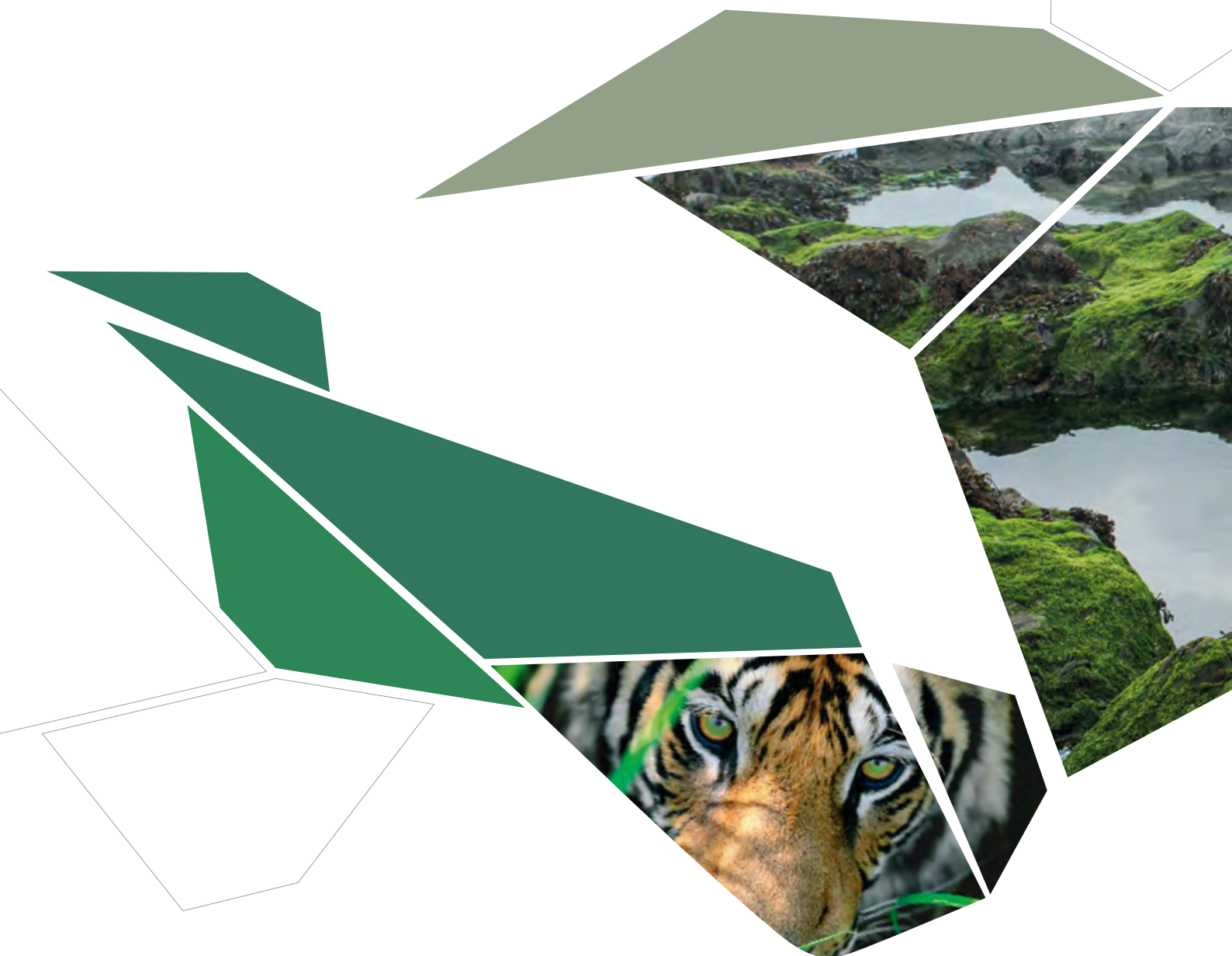


0712
Steel Blue



0703
Dove Blue





green

A sea of fern leaves in the forest's twilight. The iridescent eyes of a feline. Give your buildings a look of opulence.

0725
Yellowish Green



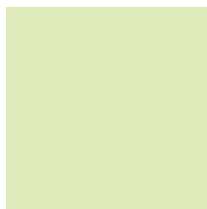
0623
Green



0059
Dark Green



0592
Kiwi Green



0663
Reseda Green



0662
Jade Green





0591
Fir Green



0611
Pale Olive



0612
Olive



0056
Atlantis



0617
Petrol Green



0631
Turquoise





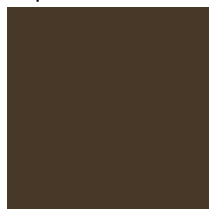
brown

Clay castles in front of a steel-blue savannah sky. The delicately speckled house of a vineyard snail. Give your buildings a pristine, natural look.

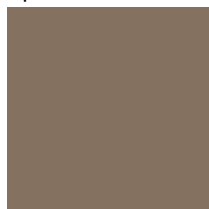
0645
Tobacco



0657
Sepia Brown



0768
Sparrow



0692
Old Pink



0661
Terracotta



5032
Cinnamon

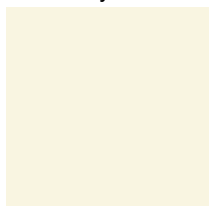




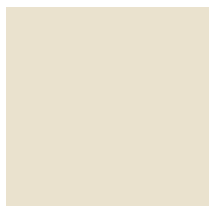
pastel

Stones smoothed by the waters of the surf. Subtle interplay of ivory and cream shades. Give your building exceptionally noble looks.

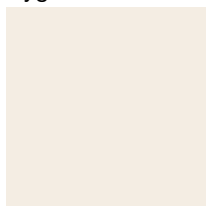
0073
Pale Ivory



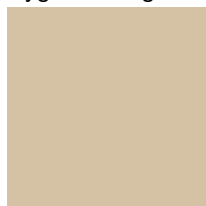
0066
Sand



0733
Hygienic White



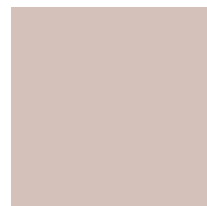
0627
Hygienic Beige



0651
Cream



0693
Orchid

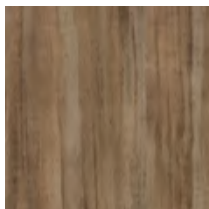




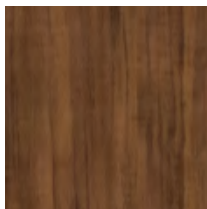
impressive

Distinctive at first glance – and at any further one. The look of precious woods from all over the world. Give your buildings impressive style.

0919
Ecuador



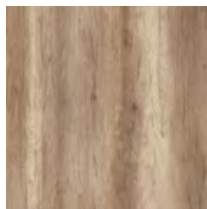
0922
Amazon



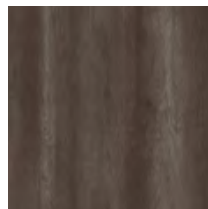
0601
Sun Pear



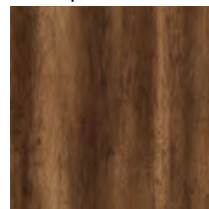
5171
Polar Oak



5172
Marshland Oak



5173
Barrique Oak



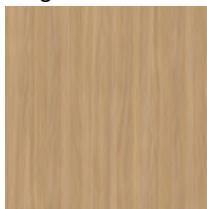




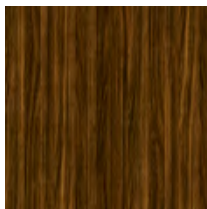
pure

Clear lines and dynamic structures between warm solid wood and urban coolness. Give your buildings powerful simplicity.

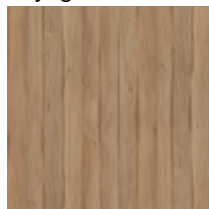
0923
Enigma



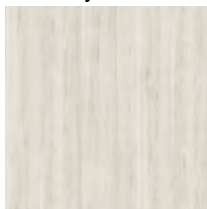
0924
Taurus



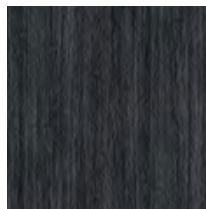
0935
Voyager



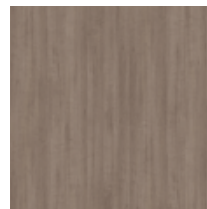
0925
Butterfly



0926
Jazz



0936
Thunder



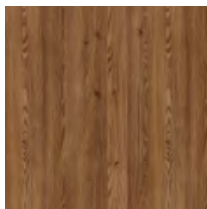




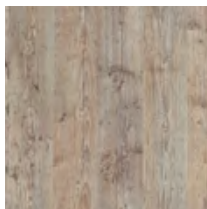
iconic

Purposely asymmetric structures and high-contrast lighting makes for visually stunning dynamics. Give your buildings impulses overflowing with life.

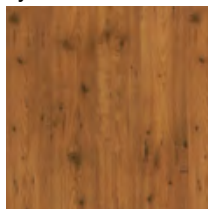
0927
Creek



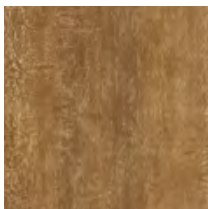
0801
Fir Platinum



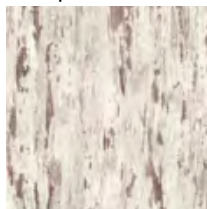
0803
Tyrol Pine



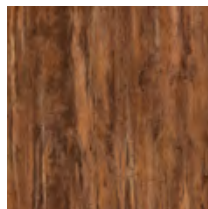
0928
Gold Coast



0929
Antique



0930
Phoenix







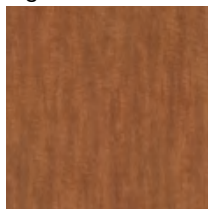
essential

Detailed patterns, delicate lines, earthy expressions. A world of warm colours, reduced to its substance. Give your buildings charisma.

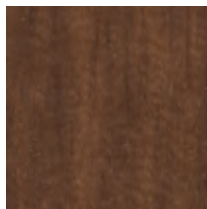
0931
Akro Almond



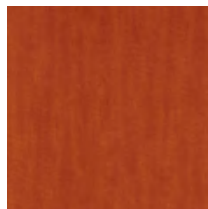
0161
Light Afro



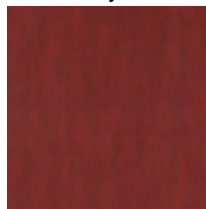
0932
Akro Terra



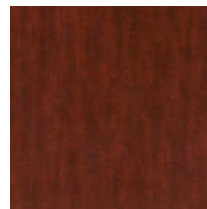
0168
Akro Rust

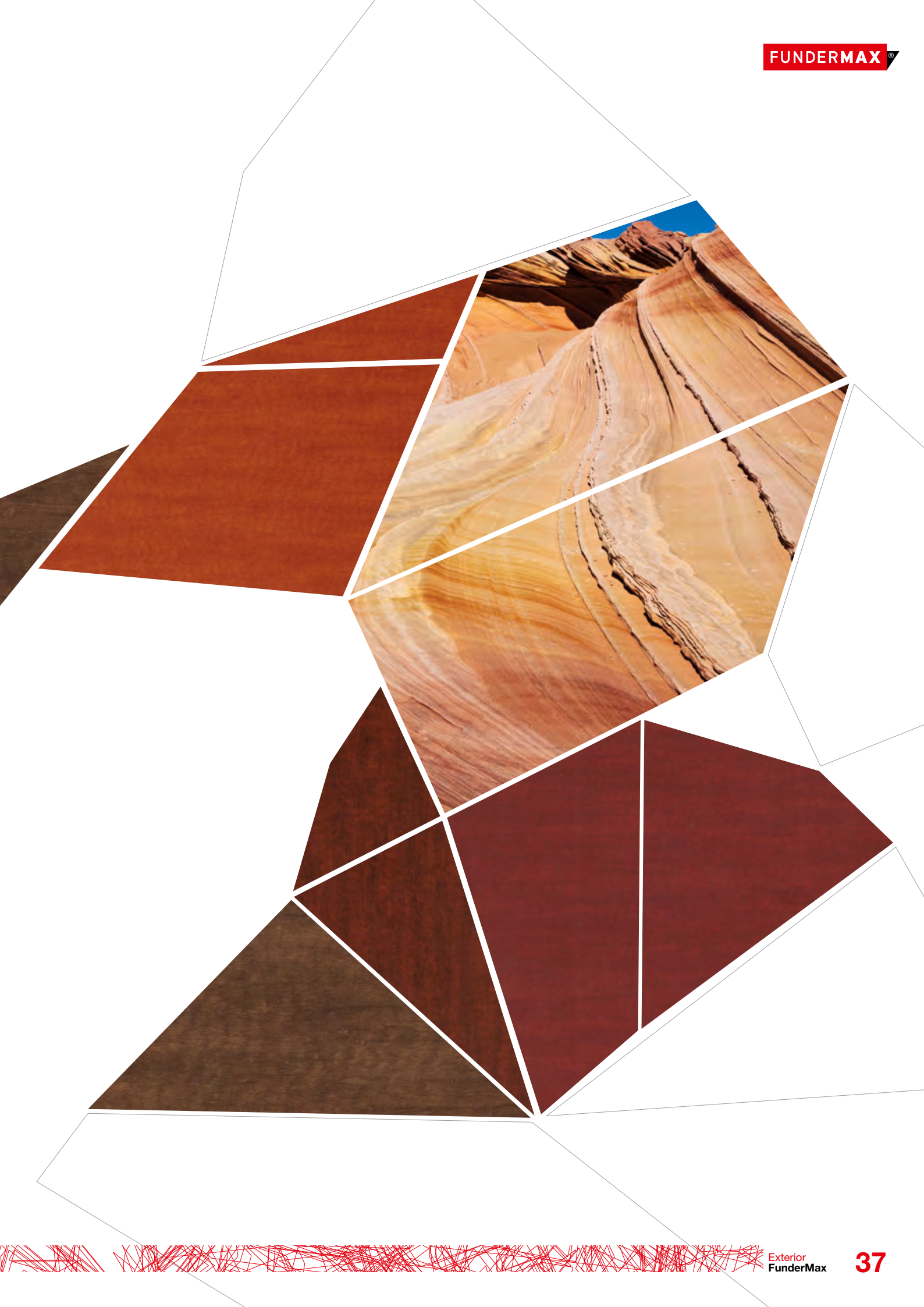


0169
Akro Ruby



0160
Dark Afro



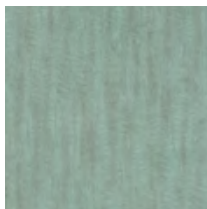




energetic

Internally moved, caught in a constant flow. A fascinating play of colour, structure and material. Give your buildings effects that reveal something previously unseen every time you look.

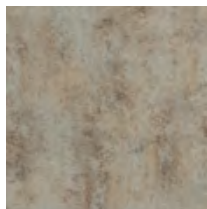
0156
Afro Patina



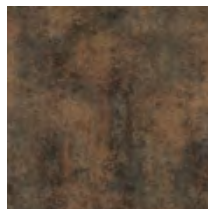
0798
Tambora



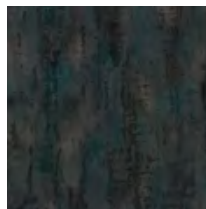
0793
Patina Tin



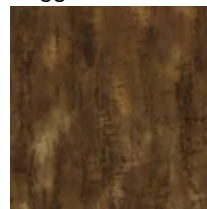
0794
Patina Bronze



0386
Blues



0387
Reggae







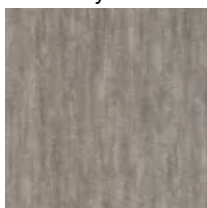
plain

Strong colour accents and calm structures in perfect harmony. Give your buildings timeless design.

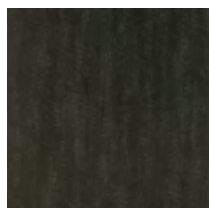
0162
Afro Sahara



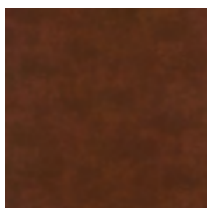
0158
Afro Grey



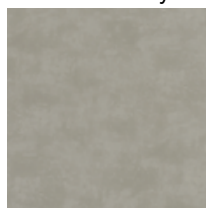
0159
Afro Black



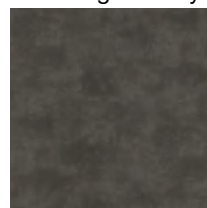
0028
Prado Brown



0026
Prado Alu Grey



0027
Prado Agate Grey







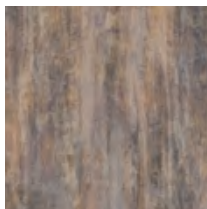
solid

Witnesses of nature's sturdy power resulting in both strong and tender structures. Give your buildings fascinating plastic intensity.

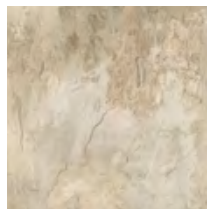
0394
Moonwalk



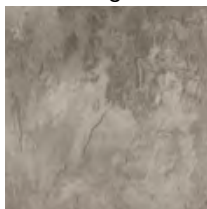
0344
Riverside



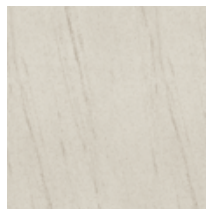
0496
Colosseum



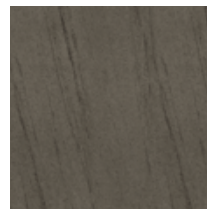
0497
Stonehenge



0421
Venus



0406
Rockstar



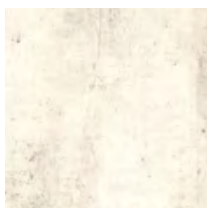




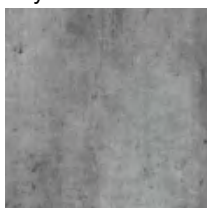
urban

Impressive, cold, larger than life: the scenery of a megacity transferred into gripping looks. Give your buildings the expression of modern metropolises.

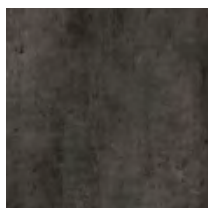
0426
Loft



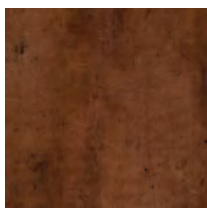
0427
Skyline



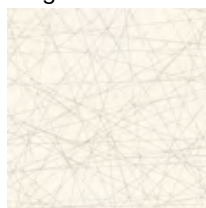
0428
Cave



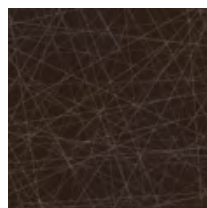
0429
Corro



0480
Kings Cross



0481
Satellite





DECOR OVERVIEW

DECOR TYPE	DECOR NO.	DECOR NAME	NEAREST NCS CODE	FORMATS (mm) AND SURFACES							DECOR ON REAR SIDE	GRAIN	
				GR 2800 x 1300	JU 4100 x 1300	SP 2800 x 1854	XL 4100 x 1854	JU 4100 x 1300	XL 4100 x 1854	JU 4100 x 1300			
COLOUR				NT	NT	NT	NT	NG	NH*	NY*			
U	0056	Atlantis	S 3040-B40G	o	o	o	o	o	o			X	N
U	0059	Dark Green	S 5020-G			o	o		o			X	N
U	0065	Ivory	S 0510-Y20R	o	o	o	o	o	o			X	N
U	0066	Sand	S 1505-Y20R	o	o	o	o	o	o			X	N
U	0070	Carbon Grey	S 7502-B	o	o	o	o	o	o			X	N
U	0073	Pale Ivory	S 0505-G90Y			o	o		o			X	N
U	0074	Pastel Grey	S 2500-N	o	o	o	o	o	o			X	N
U	0075	Dark Grey	S 5000-N	o	o	o	o	o	o			X	N
U	0077	Charcoal	S 7005-R50B	o	o	o	o	o	o			X	N
U	0080	Black	S 9000-N	o	o	o	o	o	o			X	N
U	0085	White	S 0502-G50Y	o	o	o	o	o	o	o		X	N
U	0091	Starlight	S 0502-R50B	o	o	o	o	o	o	o		X	N
U	0237	Gentian Blue	S 5040-R80B	o	o	o	o	o	o			X	N
U	0591	Fir Green	S 7020-B90G	o	o	o	o	o	o			X	N
U	0592	Kiwi Green	S 1015-G40			o	o		o			X	N
U	0611	Pale Olive	S 2010-G90Y			o	o		o			X	N
U	0612	Olive	S 5020-G70Y	o	o	o	o	o	o			X	N
U	0617	Petrol Green	S 6020-B30G			o	o		o			X	N
U	0623	Green	S 4040-G10Y	o	o	o	o	o	o			X	N
U	0627	Hygienic Beige	S 2010-Y40R	o	o	o	o	o	o			X	N
U	0631	Turquoise	S 6020-B10G	o	o	o	o	o	o			X	N
U	0645	Tobacco	S 4020-Y30R	o	o	o	o	o	o			X	N
U	0647	Golden Yellow	S 1050-Y10R	o	o	o	o	o	o			X	N
U	0651	Cream	S 0907-Y50R	o	o	o	o	o	o			X	N
U	0654	Jasmin	S 1515-Y20R			o	o		o			X	N
U	0657	Sepia Brown	S 8010-Y50R	o	o	o	o	o	o			X	N
U	0661	Terracotta	S 4040-Y80R	o	o	o	o	o	o			X	N
U	0662	Jade Green	S 4010-G30Y	o	o	o	o	o	o			X	N
U	0663	Reseda Green	S 1510-G20Y			o	o		o			X	N
U	0674	Mars Red	S 1580-Y90R	o	o	o	o	o	o			X	N
U	0680	Wine Red	S 5040-R10B	o	o	o	o	o	o			X	N
U	0687	Maize	S 0520-Y20R	o	o	o	o	o	o			X	N
U	0689	Dark Red	S 2570-Y80R	o	o	o	o	o	o			X	N
U	0691	Purple	S 5040-Y90R	o	o	o	o	o	o			X	N
U	0692	Old Pink	S 4020-Y60R	o	o	o	o	o	o			X	N
U	0693	Orchid	S 2010-Y80R			o	o		o			X	N
U	0702	Night Blue	S 8010-R70B	o	o	o	o	o	o			X	N
U	0703	Dove Blue	S 3020-B10G	o	o	o	o	o	o			X	N
U	0706	Glacier Blue	S 2010-B			o	o		o			X	N
U	0712	Steel Blue	S 4030-B	o	o	o	o	o	o			X	N
U	0717	Atlantic	S 2060-R90B	o	o	o	o	o	o			X	N
U	0725	Yellowish Green	S 1060-G60Y	o	o	o	o	o	o			X	N
U	0733	Hygienic White	S 0804-Y30R	o	o	o	o	o	o			X	N
U	0736	Saffron	S 1050-Y20R	o	o	o	o	o	o			X	N
U	0741	Birch Grey	S 2002-G50Y	o	o	o	o	o	o			X	N
U	0742	Pebble Grey	S 1002-Y	o	o	o	o	o	o	o		X	N
U	0747	Medium Grey	S 4502-Y	o	o	o	o	o	o			X	N
U	0753	Cool Grey Medium	S 3502-B	o	o	o	o	o	o			X	N
U	0768	Sparrow	S 6005-Y20R	o	o	o	o	o	o			X	N
U	0776	Concrete Grey	S 4005-B20G	o	o	o	o	o	o			X	N
U	0851	Winter White	S 0505-Y30R	o	o	o	o	o	o			X	N
U	3003	Rubinus Red	S 2570-R	o	o	o	o	o	o			X	N
U	3007	Black Red	S 8010-R10B			o	o		o			X	N
U	5032	Cinnamon	S 3560-Y30R	o	o	o	o	o	o			X	N
U	6010	Electric	S 0580-Y	o								0077	N
U	6020	Satsuma	S 0585-Y40R	o								0077	N
U	6030	Candy	S 1070-R20B	o								0077	N
U	6031	Berry	S 2065-R20B	o								0077	N
U	6040	Grape	S 3555-R60B	o								0077	N
U	6050	Pool	S 1565-B	o								0077	N
METALLIC				NT	NT	NT	NT	NG	NH*	NY*			
S	0056 + G	Atlantis + Glitter		o	o			o				X	R
S	0066 + G	Sand + Glitter		o	o			o				X	R
S	0077 + G	Charcoal + Glitter		o	o			o				X	R
S	0080 + G	Black + Glitter		o	o			o				X	R
S	0768 + G	Sparrow + Glitter		o	o			o				X	R
S	5032 + G	Cinnamon + Glitter		o	o			o				X	R

FORMATS (mm) AND SURFACES

DECOR TYPE	DECOR NO.	DECOR NAME	GR 2800 x 1300	JU 4100 x 1300	SP 2800 x 1854	XL 4100 x 1854	JU 4100 x 1300	XL 4100 x 1854	JU 4100 x 1300	DECOR ON REAR SIDE	GRAIN
NATURE			NT	NT	NT	NT	NG	NH*	NY*		
H	0160	Dark Afro	○	○	○	○	○	○		X	R
H	0161	Light Afro	○	○	○	○	○	○		X	R
H	0168	Akro Rust	○	○	○	○	○	○		X	R
H	0169	Akro Ruby	○	○	○	○	○	○		X	R
H	0601	Sun Pear	○	○	○	○	○	○		X	R
H	0801	Fir Platinum***	○	○	○	○				X	R
H	0803	Tyrol Pine***	○	○	○	○		○		X	R
H	0919	Ecuador***	○	○	○	○				X	R
H	0922	Amazon	○	○	○	○	○	○		X	R
H	0923	Enigma***	○	○	○	○				X	R
H	0924	Taurus	○	○	○	○	○	○		X	R
H	0925	Butterfly***	○	○	○	○				X	R
H	0926	Jazz	○	○	○	○	○	○		X	R
H	0927	Creek	○	○	○	○	○	○		X	R
H	0928	Gold Coast	○	○	○	○	○	○		X	R
H	0929	Antique	○	○	○	○	○	○		X	R
H	0930	Phoenix	○	○	○	○	○	○		X	R
H	0931	Akro Almond	○	○	○	○	○	○		X	R
H	0932	Akro Terra	○	○	○	○	○	○		X	R
H	0935	Voyager***	○	○	○	○				X	R
H	0936	Thunder***	○	○	○	○				X	R
H	5171	Polar Oak	○	○	○	○	○	○		X	R
H	5172	Marshland Oak	○	○	○	○	○	○		X	R
H	5173	Barrique Oak	○	○	○	○	○	○		X	R
MATERIAL			NT	NT	NT	NT	NG	NH*	NY*		
M	0026	Prado Alu Grey	○	○	○	○	○	○		X	R
M	0027	Prado Agate Grey	○	○	○	○	○	○		X	R
M	0028	Prado Brown	○	○	○	○	○	○		X	R
M	0156	Afro Patina	○	○	○	○	○	○		X	R
M	0158	Afro Grey	○	○	○	○	○	○		X	R
M	0159	Afro Black	○	○	○	○	○	○		X	R
M	0162	Afro Sahara	○	○	○	○	○	○		X	R
M	0344	Riverside	○	○	○	○	○	○	○	X	R
M	0386	Blues	○	○	○	○	○	○		X	R
M	0387	Reggae	○	○	○	○	○	○		X	R
M	0394	Moonwalk	○	○	○	○	○	○	○	X	R
M	0406	Rockstar	○	○	○	○	○	○	○	X	R
M	0421	Venus	○	○	○	○			○	X	R
M	0426	Loft	○	○	○	○	○	○	○	X	R
M	0427	Skyline	○	○	○	○	○	○	○	X	R
M	0428	Cave***	○	○	○	○				X	R
M	0429	Corro	○	○	○	○	○	○		X	R
M	0480	Kings Cross	○	○	○	○	○	○		X	R
M	0481	Satellite	○	○	○	○	○	○		X	R
M	0496	Colosseum***	○	○	○	○			○	X	R
M	0497	Stonehenge	○	○	○	○	○	○	○	X	R
M	0602	Highway	○	○	○	○	○	○		X	R
M	0603	Ardens	○	○	○	○	○	○		X	R
M	0604	Spargo	○	○	○	○	○	○		X	R
M	0780	Aqua	○	○	○	○	○	○		X	R
M	0781	Kontra	○	○	○	○	○	○		X	R
M	0782	Petroleum	○	○	○	○	○	○		X	R
M	0793	Patina Tin***	○	○	○	○			○	X	R
M	0794	Patina Bronze***	○	○	○	○			○	X	R
M	0798	Tambora	○	○	○	○	○	○		X	R
AUTHENTIC**			NT	NT	NT	NT	NG	NH*	NY*		
C	AUTN	Authentic Natura				○		○		X	R

*BACK NT

**ARTIFICIAL WEATHERING EN ISO 4892-2: 1500H.

IN ACCORDANCE WITH THE GRAY SCALE EN 20105-A02: 3

***THICKNESS: 2-10 mm

LEGEND

X = DESIGN ON BOTH SIDES

○ = NO QUANTITY LIMIT, DELIVERY TIME PROVIDED UPON REQUEST.

R = THIS DESIGN IS UNI-DIRECTIONAL. PLEASE NOTE FOR OPTIMIZATION AND CUTTING.

N = THIS DESIGN IS MULTI-DIRECTIONAL. YOU CAN TURN IT WHEN CUTTING.

PROTECTIVE LAMINATE COVER FOR TRANSPORT AVAILABLE FOR AN EXTRA CHARGE.

NT

NG = GLOSS

NH = HEXA

NY = SKY

U = COLOUR

H = NATURE

M = MATERIAL

S = METALLIC

C = AUTHENTIC

FUNDERMAX DEUTSCHLAND GMBH
Industriestrasse 1
D-92442 Wackersdorf
info@fundermax.biz
www.fundermax.de

FUNDERMAX FRANCE SARL
3 Cours Albert Thomas
F-69003 Lyon
Tel.: +33 (0) 4 78 68 28 31
Fax: +33 (0) 4 78 85 18 56
info@fundermax.biz
www.fundermax.fr

FUNDERMAX INDIA PVT. LTD.
Sy. No. 7, Honnenahalli Village
Bengaluru-Doddballapur Highway Road
Yelahanka Hobli, Bangalore North Taluk
IND-560064 Bangalore
Tel.: +96113 99211
office@fundermax.biz
www.fundermax.in

FUNDERMAX ITALIA S.R.L.
Viale Venezia 22
I-33052 Cervignano del Friuli
info@fundermax.biz
www.fundermax.it

FUNDERMAX NORTH AMERICA, INC.
9401-P Southern Pine Blvd.
US-Charlotte, NC 28273
Tel.: +1 980 299 0035
Fax: +1 704 280 8301
office.america@fundermax.biz
www.fundermax.us

FUNDERMAX POLSKA SP. Z O.O.
ul. Rybitwy 12
PL-30722 Kraków
Tel.: +48 (0) 12 65 34 528
Fax: +48 (0) 12 65 70 545
info@fundermax.biz

FUNDERMAX RUSSIA SHOW:ROOM
of.203, bld.2, 10, Nizhnyaya
Syromyatnicheskaya str.,
RU-Moscow, 105120
Tel.: +7 (499)130-3094
fundermax.ru@fundermax.biz
www.fundermax.ru

FUNDERMAX SWISS AG
Industriestrasse 38
CH-5314 Kleindöttingen
Tel.: +41 (0) 56-268 83 11
Fax: +41 (0) 56-268 83 10
info@fundermax.biz
www.fundermax.ch

FunderMax GmbH

Klagenfurter Straße 87-89, A-9300 St. Veit/Glan
T +43 (0) 5/9494-0, F +43 (0) 5/9494-4200
office@fundermax.at, www.fundermax.at