



Louver systems

AC-E-series

AC-E louver system



AluClik facade louver is a modular interlocking louver system. It can be assembled on site quickly, using modular components. High-quality fast-mounting installation system saves time and installation costs during construction.

Our facade louvers are popular due to their ease of use, and them being long-lasting and functional. Facade louvers are easily installed, fireproof and moisture-proof.

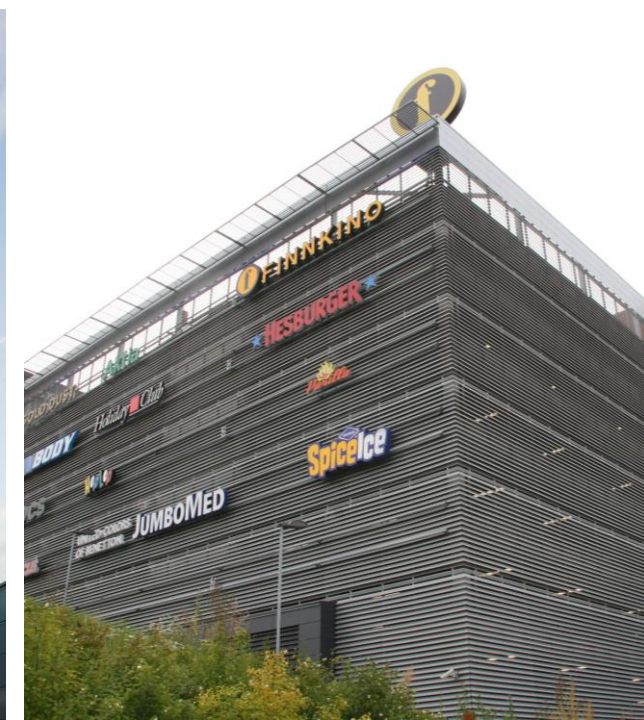
Diverse color shades, different surface coatings and forms are available.

We provide special solutions in accordance with the wishes of the architect.

Adaptive and multi-use system

- AluClik louver system can be assembled on site quickly, It can be used as a wall-based element or floor based element. Can be mounted horizontally or vertically. Which makes it possible to be used as beautiful fence





optimal use

- AluKlik louver is a popular choice for modern buildings, especially for shopping centres, office buildings and car parking facilities
- The louvers can also be used for upholsteries for less spectacular surfaces, such as hiding technology.

Louvered Roof Equipment Screens

- Alu Klik Louvers can be used as vision barriers to hide mechanical equipment and other unsightly items. Louver blades allow airflow and reduce the wind loads imposed on structural framing



optional accessories

- Systems for installing removable boards
- Protection net from birds and small animals
- Movement joints
- Storm protection system





High light permeability and clear vision

- AC-E Sun Shade Louvers are lightweight, overhead windows or front-mounted sun protection systems. They prevent excessive heat and dazzling sunlight coming indoors without blocking the visibility outside.





Material & finishes

We usually use aluminum as the material, since it is lighter than steel and very resistant to weathering. Aluminum as a material is recyclable and maintenance free and it is easy to paint in the desired tone.



Alupro offers an extensive range of colors in highly durable weather resistant powder coating. Powder coating provides an UV-protected, long-lasting surface. The colors can be selected from the RAL color chart. In addition, aluminum structures can be painted with so-called washable paint to remove graffiti from the facade quickly.

Environmentally friendly & Competitive prices



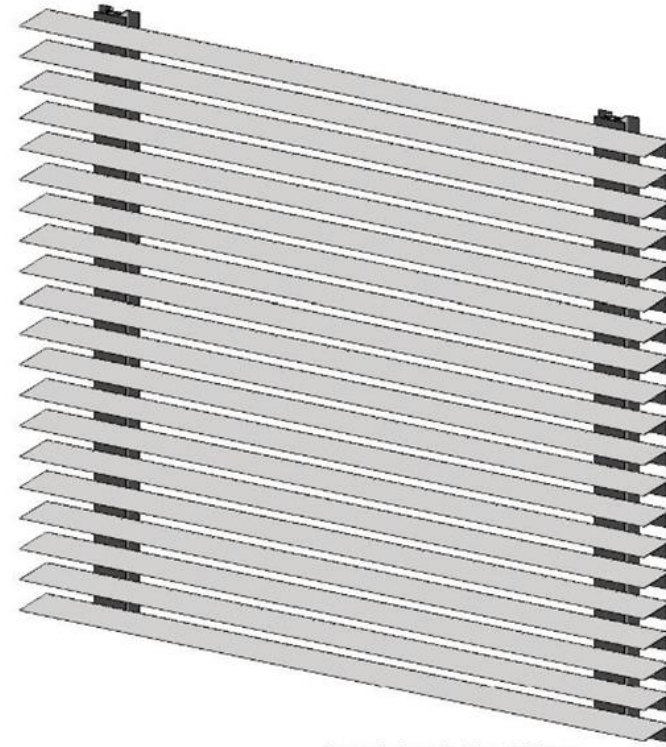
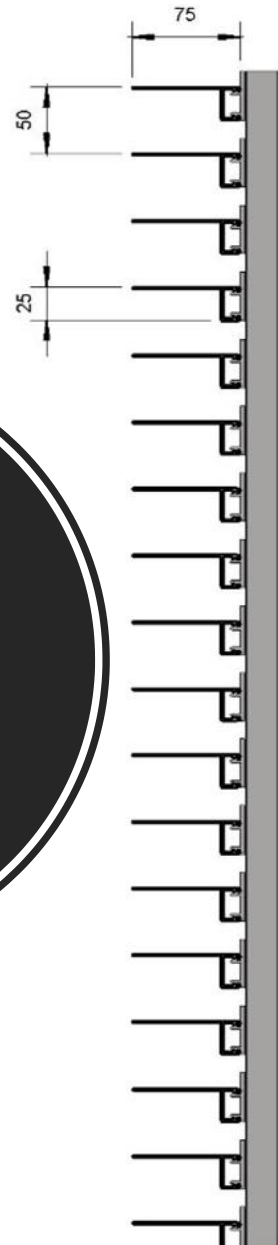
AC-E provides architects and contractors with the most cost effective louver to do the job. alupro will guide you to the right louver at the lowest cost



Aupro use recycled aluminium and can be finished in our environmentally friendly powder coat finishes

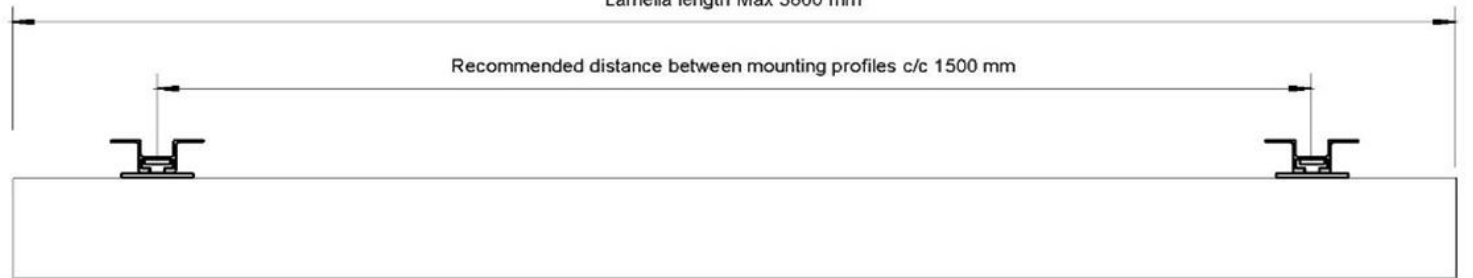


Louver system



Lamella length Max 3600 mm

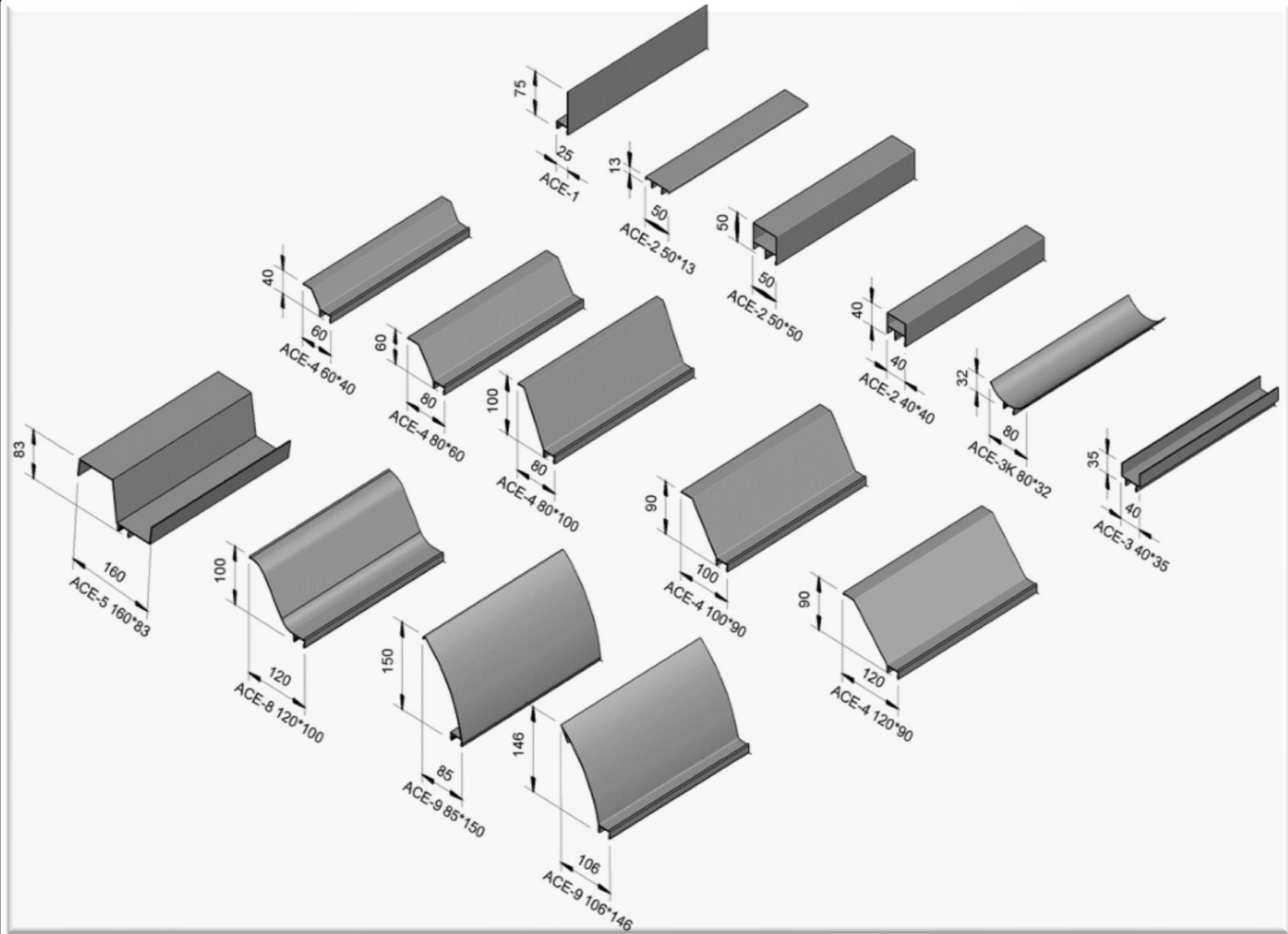
Recommended distance between mounting profiles c/c 1500 mm



Specifications

❖ Louvre blades:

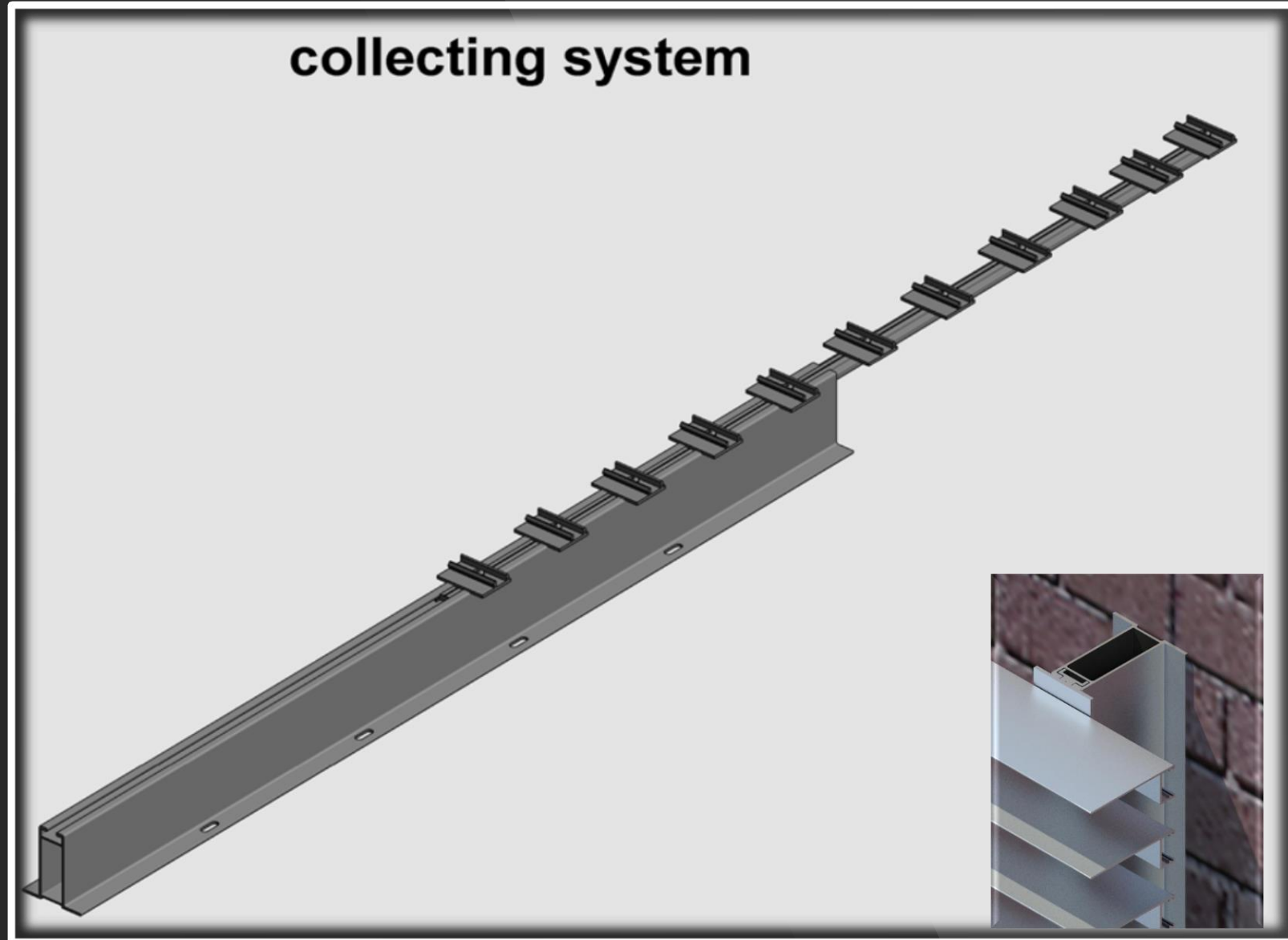
- Material : Aluminium extrusions,
- Blade thickness: Minimum 1,5 mm
- Surface treatment: powder coating
- Fitting method: Click the louvre blades onto the Bracket in accordance with the manufacturer's fitting instructions



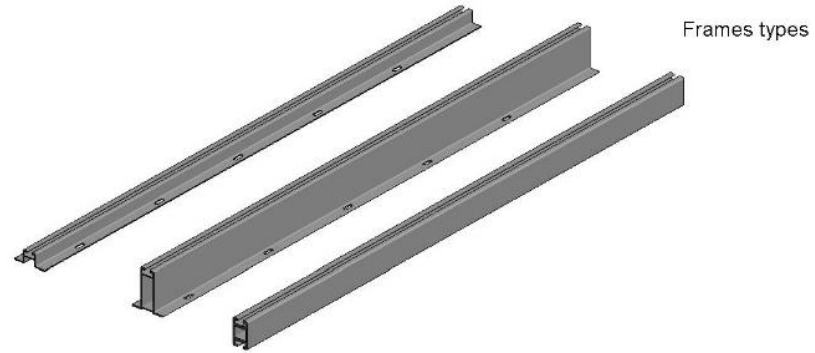
Specifications

❖ collecting system:

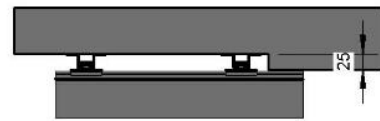
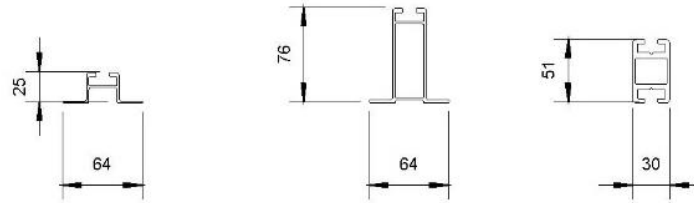
- Types:
 - Wall based support profile 25 mm
 - Wall based support profile 76 mm
 - Floor based support profile
- Material: Aluminium extrusions
- Width: check Drawing the frame type
- Profile thickness: Minimum 2,0 mm
- Surface treatment: powder coating
- Fitting method: Either bolted through bolts to the wall or fixed by a metal flange to the floor In accordance with the manufacturer's fitting instructions



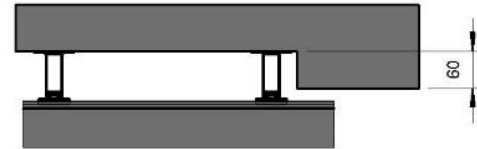
Wall based and floor based collecting system



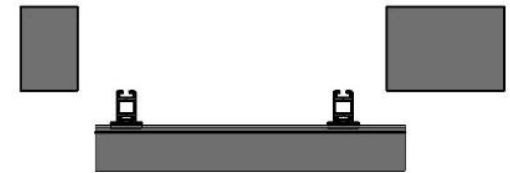
ACE- Frame Types



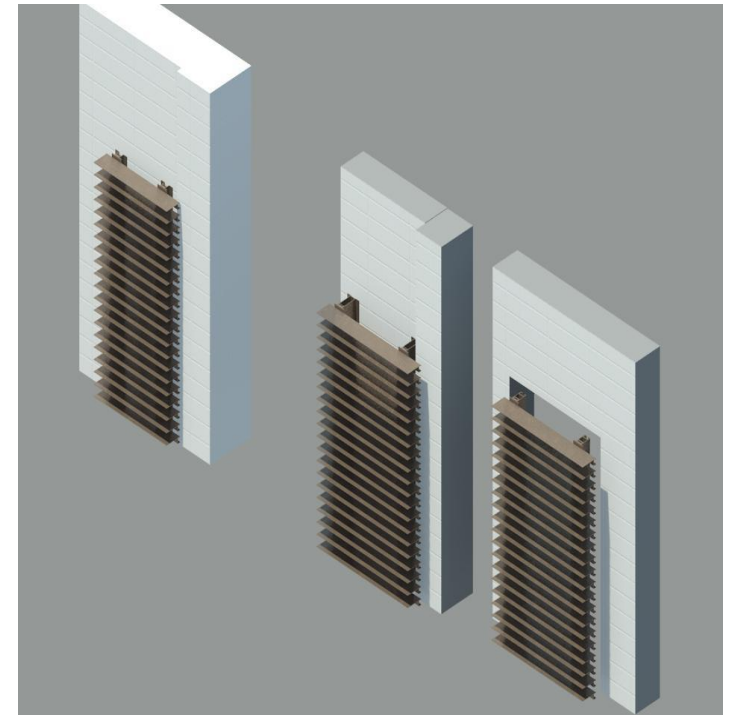
wall based frame



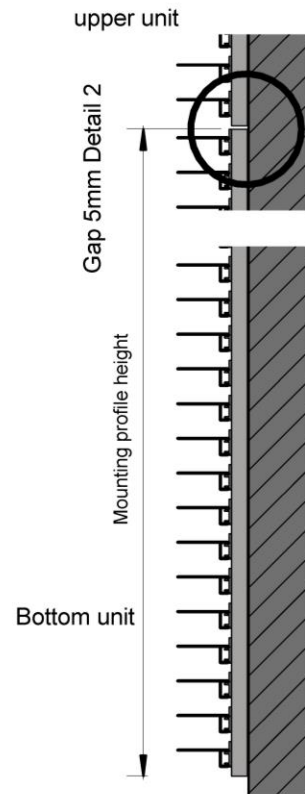
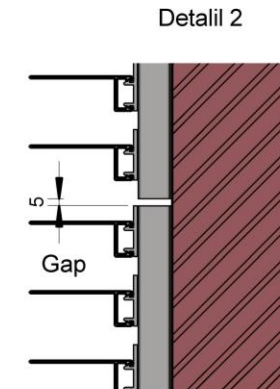
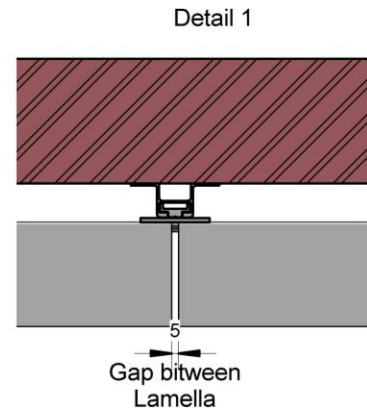
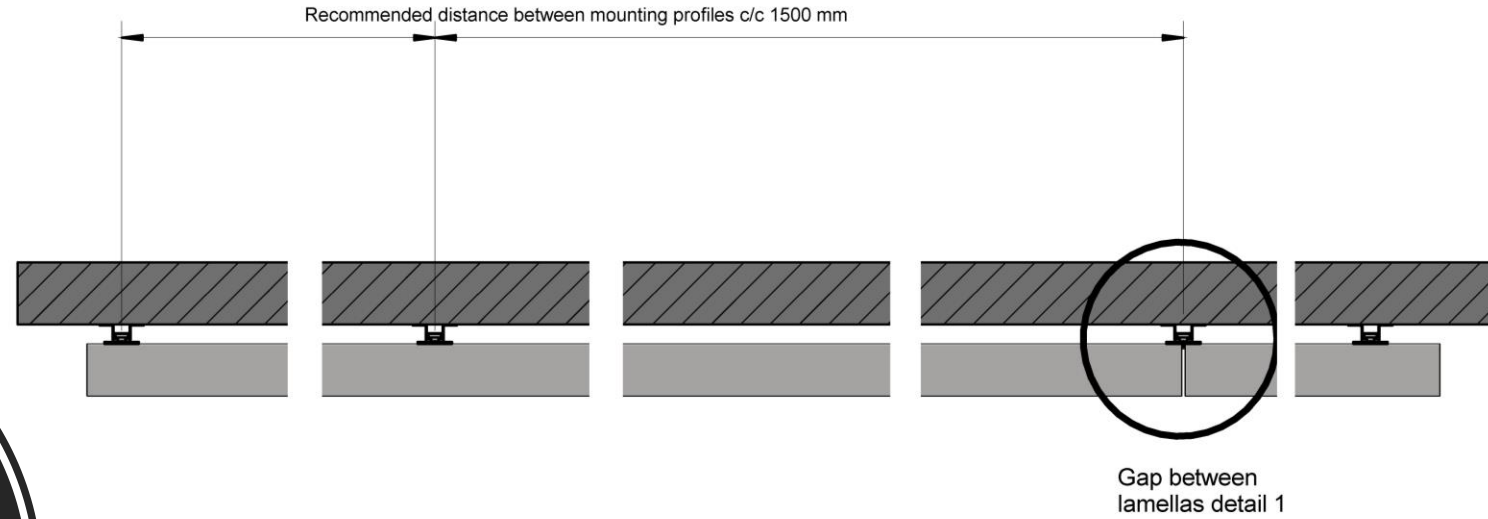
wall based frame



Floor based frame

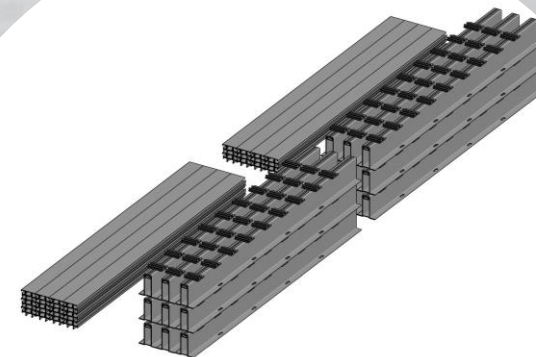


Recommended gaps between elements



Packaging and shipping

- AluClick distinguished the possibility of packaging within a compressed and minor size container, which saves a lot of freight charges





Projects



www.Alupro.com

