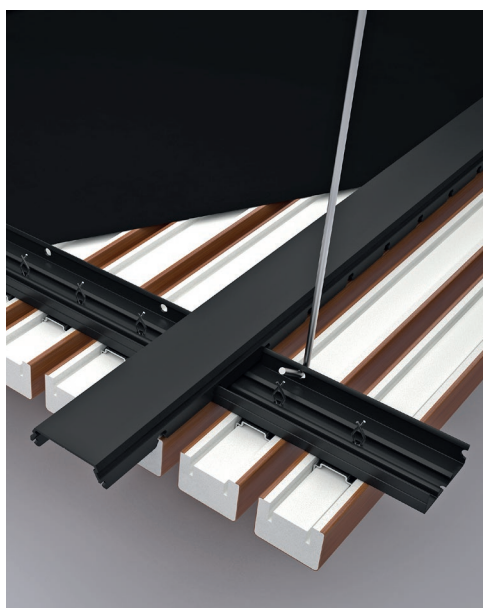


# *GUSTAFS LINEAR SYSTEM*

## *GUSTAFS LINEAR RIB INSTALLATION*



The quick-up assembly system is a black aluminum grid support system. User friendly the grid offers installation reliability while providing a perfect visual result. No tools are needed to assemble the inter-locking components. A fully demountable version is available, ideal when access to the ancillary systems is required.

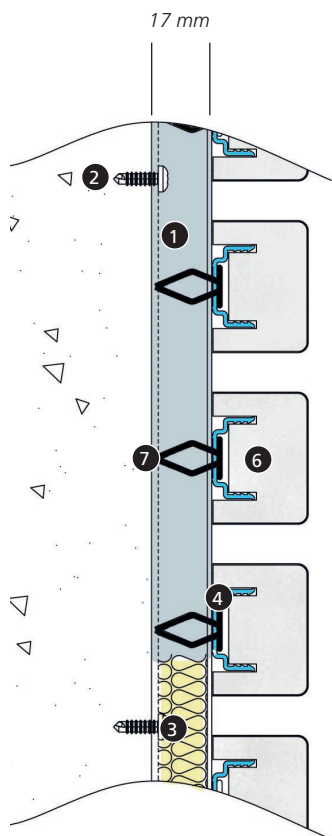
### DEMOUNTING

When the Ribs are installed with the spring clips, they can be demounted by gently pulling close to all the points of connection (U-FIX + spring clip), starting at one of the ends. Do not try to pull down the whole Rib by pulling at one of the ends only.

### RE-INSTALLING

In the case of a re-installation of a removed Rib, be sure all spring clips are properly aligned with the center of the holes in the BASE-C or BASE-W profiles before pressing firmly home.

## WALL INSTALLATION



1. Capax BASE-W
2. Wall fixing screw
3. Air gap or insulation
4. Capax U-FIX
5. Capax in-line connector
6. Gustafs Ribs
7. Spring clips
8. U-FIX Screw

The installation is made with screws or, for demountable ribs, spring clips.

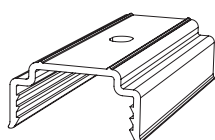
### Installation with Air Gap

- A. Carefully mount the Capax profile BASE-W (1) every 600 mm with the help of a laser-level and spacers.
- B. Attach the Capax U-FIX clips (4) flush to the BASE-W profile (1) with demountable clips or permanent screws.
- C. Twist the U-FIX clips 90° into a perpendicular position to the BASE-W.
- D. Carefully attach the Ribs to the U-FIX clips by using a rubber hammer. Use a fixture, during this installation step D, to align the Ribs. If needed, carefully re-align by hitting the ends of the Ribs with a rubber hammer and using a wooden protection block.

### Installation with Insulation & Acoustex

- A. Optional: First mount a framework of wooden battens to the wall with the help of a laser-level and spacers.
- B. Mount the Capax profile BASE-W (1) every 600 mm.
- C. Install the 17 mm insulation material (3). Alternatively 45 mm insulation in combination with 28 mm thick wooden battens.
- D. Install the Acoustex felt with some double sided tape to keep it in place during the installation.
- E. Attach the Capax U-FIX clips (4) flush to the BASE-W profile (1) with demountable clips or permanent screws. This also holds the Acoustex in place permanently. Depending on the type of Acoustex you might need to hole punch the felt before inserting the demountable clips.
- F. Twist the U-FIX clips 90° into a perpendicular position to the BASE-W.
- G. Carefully attach the Ribs to the U-FIX clips by using a rubber hammer. Use a fixture, during this installation step G, to align the Ribs. If needed, carefully re-align by hitting the ends of the Ribs with a rubber hammer and using a wooden protection block.

#### CAPAX WALL PROFILES



U-FIX-50



U-FIX-50, Gripper for Ribs, with hole, length 50 mm



U-FIX 200, In-line connector for Ribs, length 200 mm



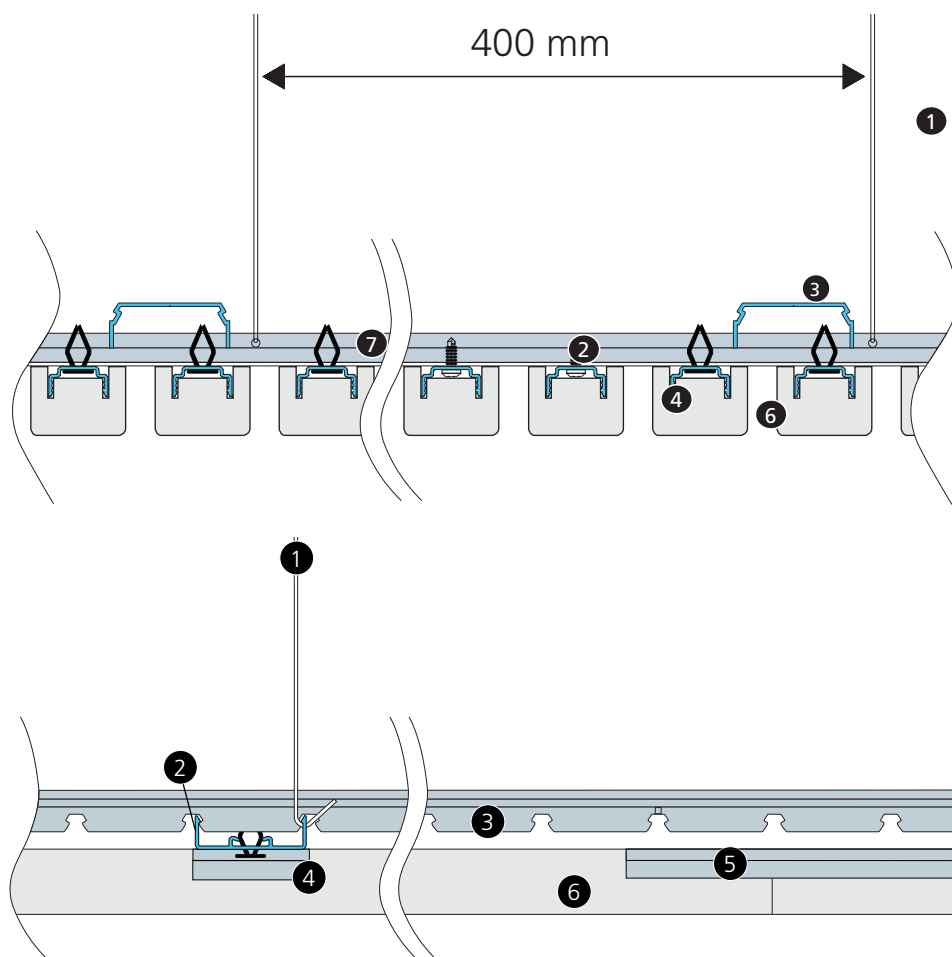
BASE-W, Wall batten, length 3000 mm

## CEILING INSTALLATION



1. Ceiling hanger
2. Suspending Capax BASE-C
3. Distance Capax 3262
4. Capax U-Fix 50
5. Capax in-line connector
6. Gustafs Ribs
7. Spring clips
8. Acoustex, Acoustic felt

### CAPAX CEILING SUSPENSION



### CAPAX CEILING PROFILES



BASE-C Ceiling carrier



3262 – Distance profile,  
with cuts every 50 mm

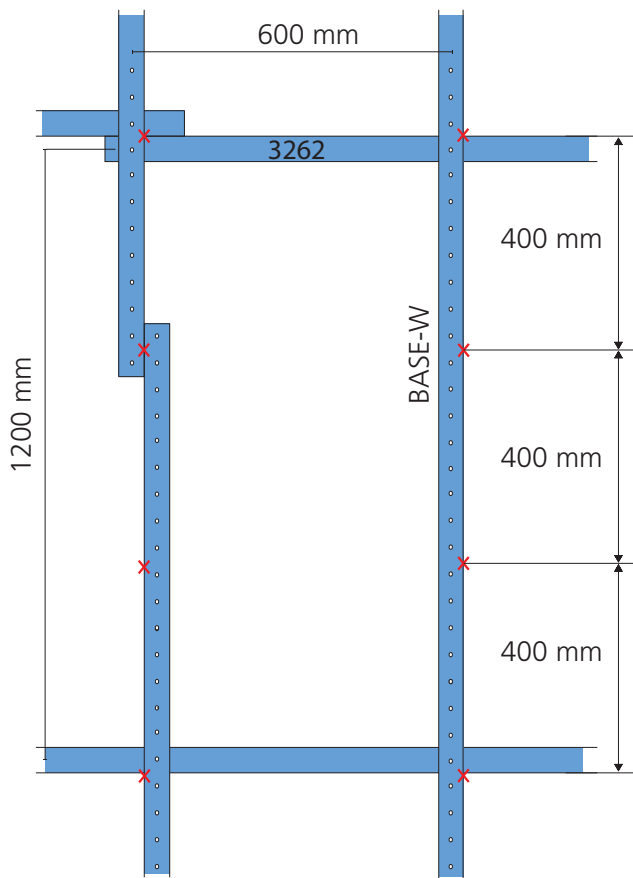


U-FIX-50, Gripper for Ribs,  
with hole, length 50 mm



U-FIX-200, Inline connector

## CEILING INSTALLATION



1. For ceiling use the maximum thickness of Rib is 28mm for CC 50 mm installations.
2. Suspend the Capax profiles BASE-C (2) with 600 mm in between.
3. The connection of BASE-C to the ceiling has to be made every 400 mm.
4. Snap the distance Capax 3262 (3) to the BASE-C profile every 1200 mm and secure the position with a self-drilling screw in the intersections.
5. Optionally install an Acoustex felt with some self-adhesive tape to keep it in place during the installation.
6. Attach the Capax U-FIX clips (4) flush to the BASE-C profile with demountable clips or permanent screws. This step will also hold the Acoustex in place permanently.
7. Twist the U-FIX (4) clips 90° into a perpendicular position to the BASE-C.
8. Press the Ribs (6) onto the U-FIX clips and if needed carefully use a squeezing clamp.
9. Optionally install an insulation material on top to fill the air gap behind the Ribs.
10. Free hanging Rib-ends should not be longer than 200 mm.

X = Suspension points

## DEMOUNTING



### DEMOUNTING

When the Ribs are installed with the spring clips, they can be demounted by gently pulling close to all the points of connection (U-FIX + spring clip), starting at one of the ends. Do not try to pull down the whole Rib by pulling at one of the ends only.

### RE-INSTALLING

In the case of a re-installation of a removed Rib, be sure all spring clips are properly aligned with the center of the holes in the BASE-C or BASE-W profiles before pressing firmly home.

## INSTALLATION DETAILS

### CONCEALED AND SIMPLE, STANDARD



### STANDARD CURVED DOWN TO 300MM RADIUS



### HATCHES



### END FINISH

