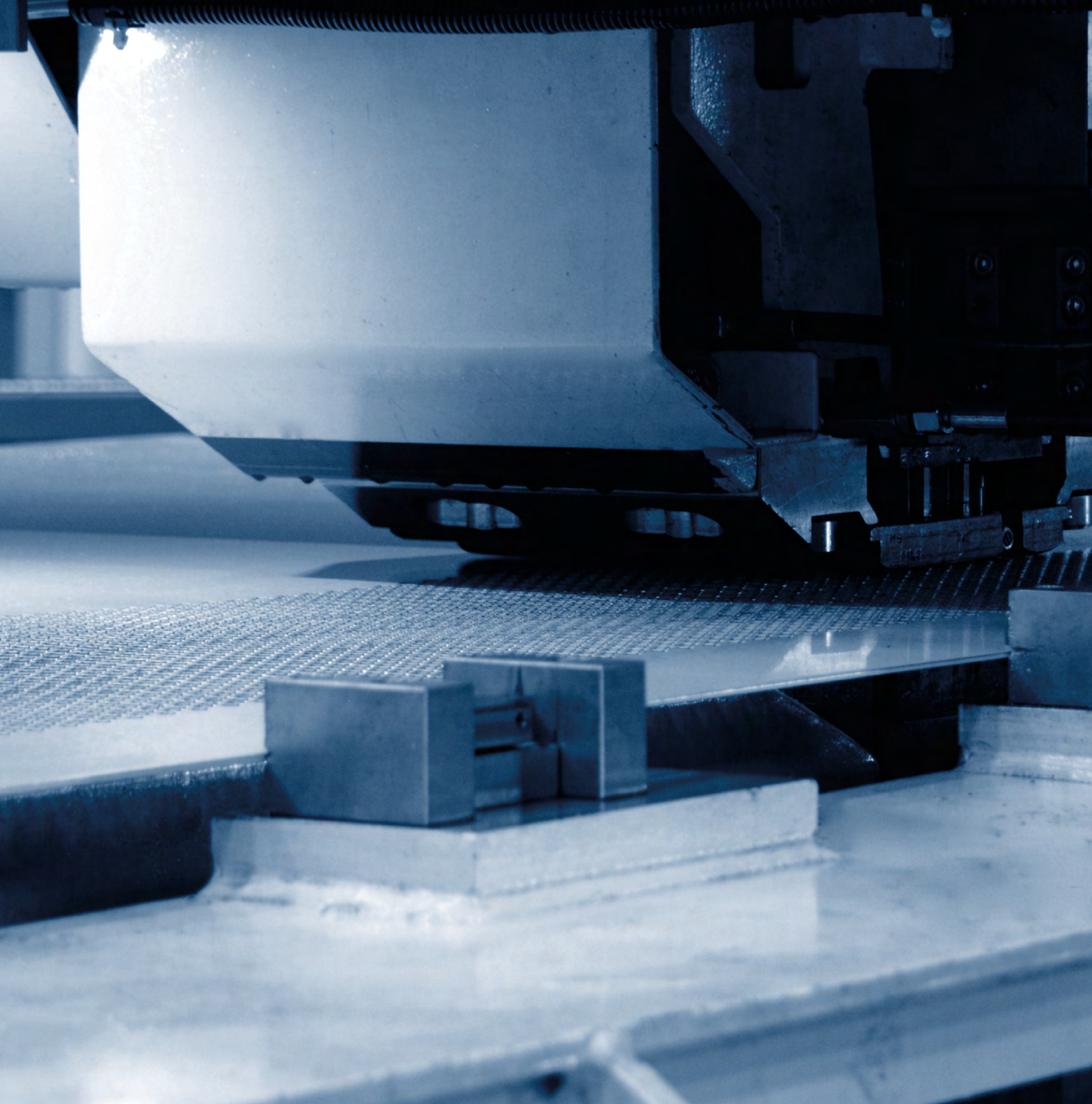


METAL SOLUTIONS

IMAR  Singular Metal Solutions



SINCE 1931

In 1931 we started up at IMAR the first perforated sheet metal manufacturing machine in Southern Europe.

Now we specialise in manufacturing all kinds of solutions in perforated, embossed, stamped and expanded sheet metal.

PRODUCTION SITES

We have two production sites: One in Ortuella (Bizkaia) of 7500 m². And another in Miranda de Ebro (Burgos) of 8200 m². The sites complement each other, allowing us to offer high production capacity and extensive innovation capability.



Bilbao, Bizkaia.

In Ortuella we perforate using quick presses with several passes which allows for customised products and thick gauges. We also provide ancillary services, including flattening, cutting and bending and we have a department for manufacturing our own dies and perforating tools.



Miranda de Ebro, Burgos.

The Miranda plant works in expanded sheet metal production with quick presses for diamond meshes of small and large gauges up to 4 mm. It specializes in large series and we punch coils with gauges of up to 3 mm and widths up to 1500 mm and perform ancillary services (cutting and flattening).



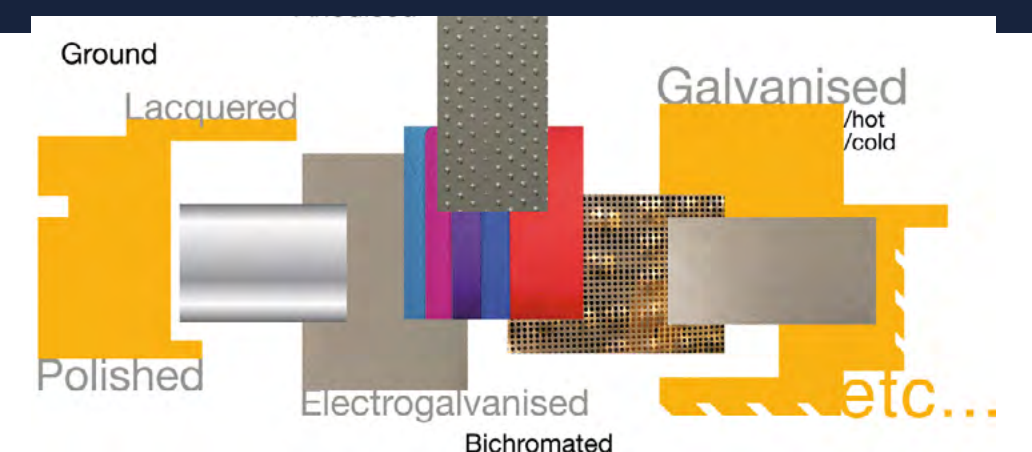
PERMANENT STOCK

- Coils, metallic strips and sheet metal in different formats and with international quality standards.
- Delivery in 24 hours anywhere in Spain for permanent stock panels.

Materials

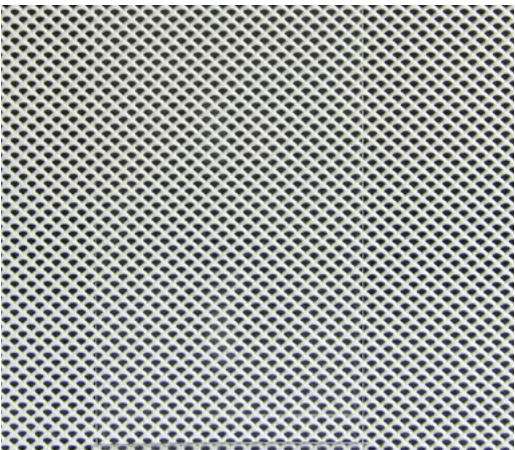


Finishes

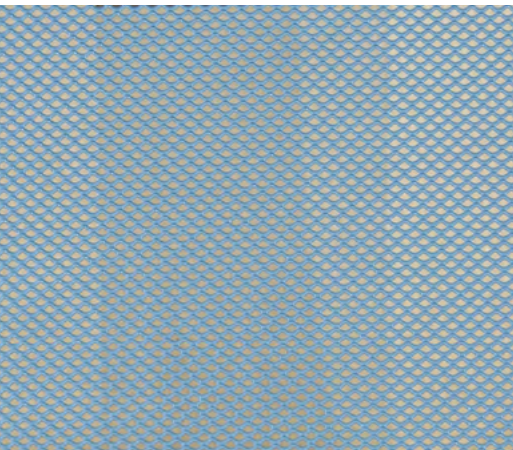


METAL
DEPLOYÉ

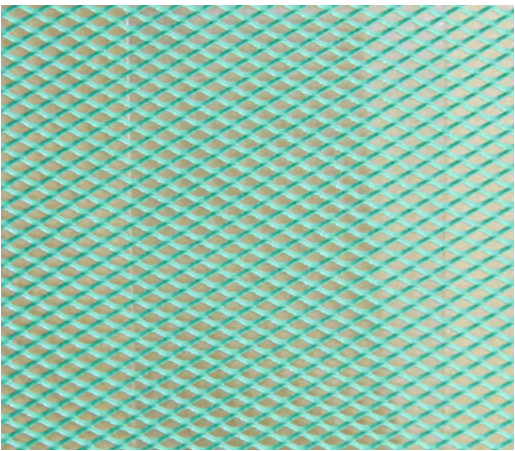
STANDARD EXPANDED MESH



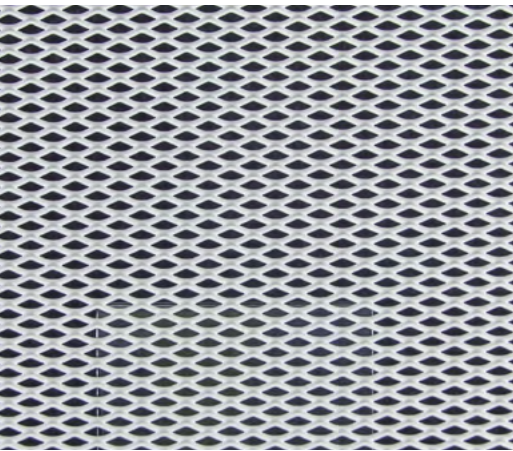
> RO 6



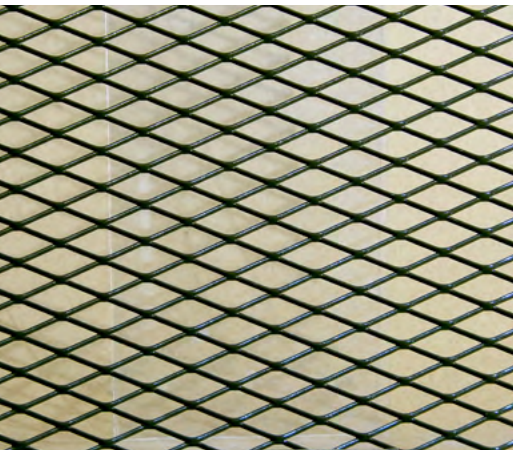
> RO 6,5



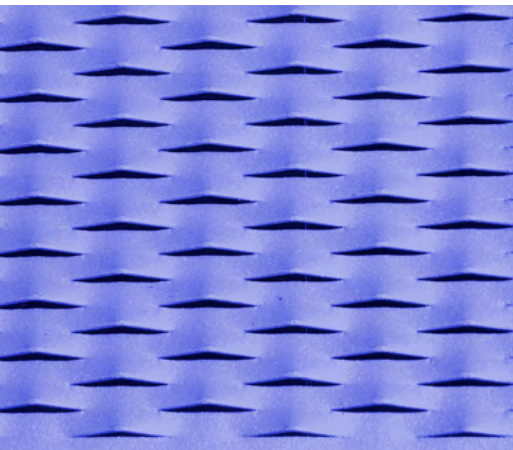
> RO 10



> RO 16

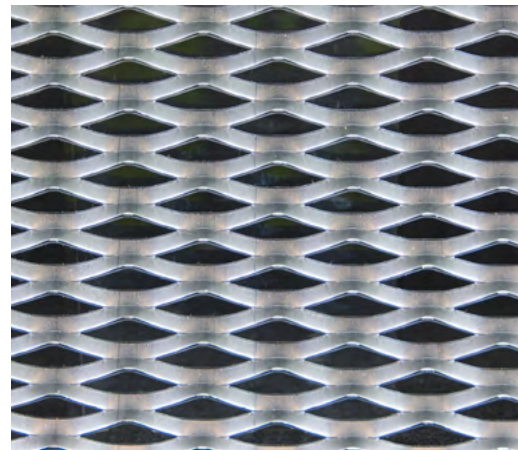


> RO 30

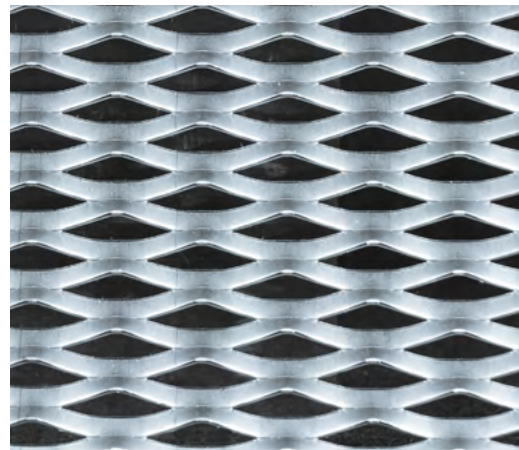


> RO 42

STANDARD EXPANDED MESH



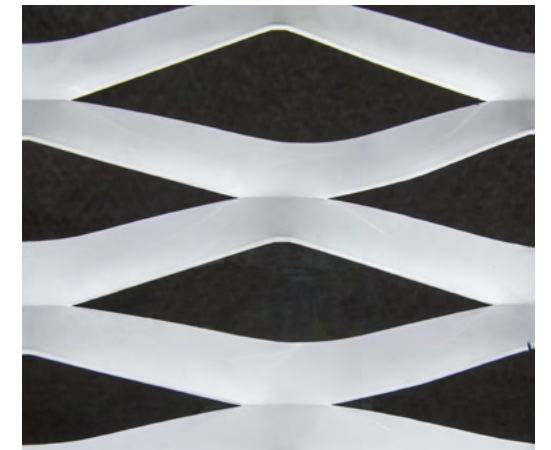
> RO 44



> RO 60



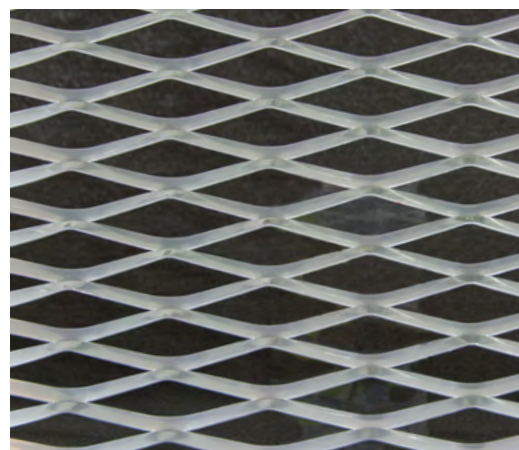
> RO 190



> RO 306



> RO 110



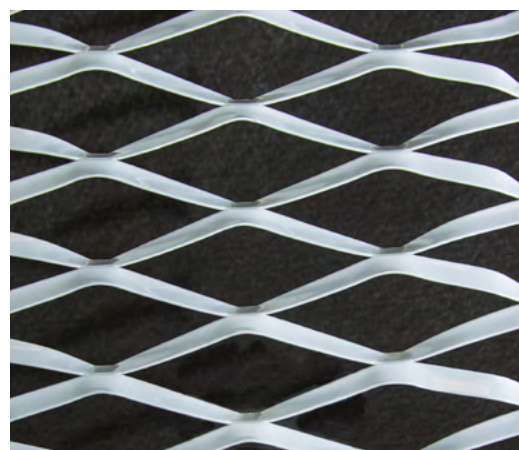
> RO 122



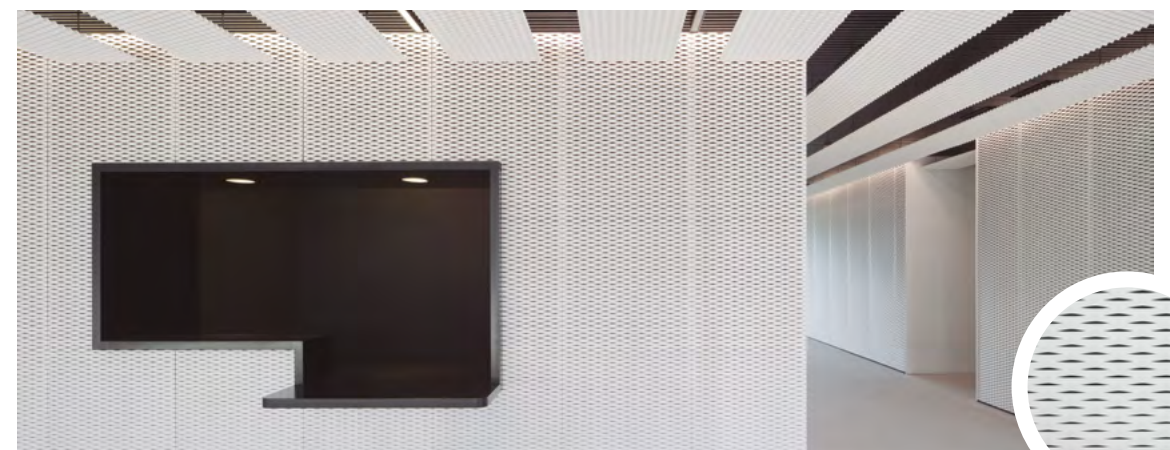
> Standar Expanded Mesh > Car Park > Ventilation



> RO 160



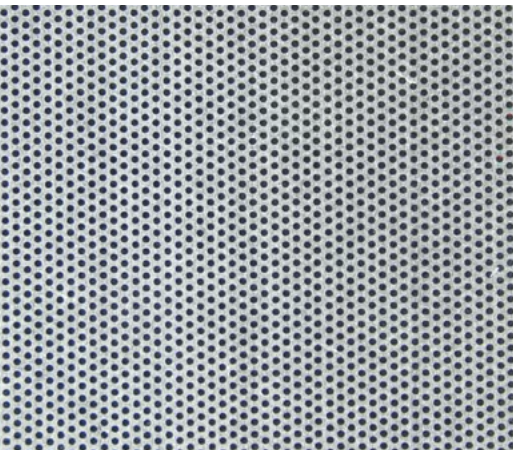
> RO 170



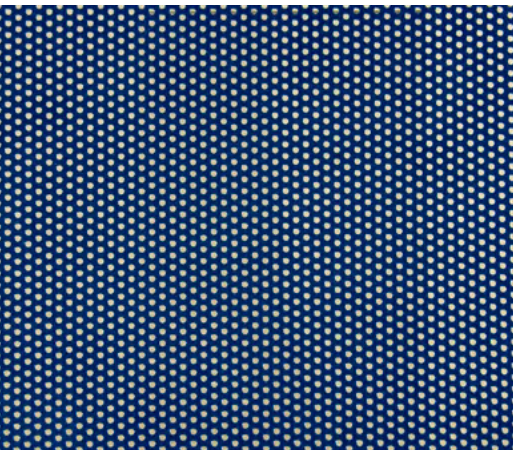
> Standar Expanded Mesh > Acoustic Isolation

UNIFORM
PERFORATING

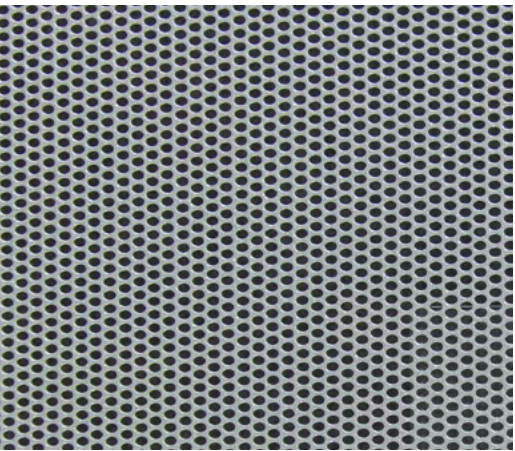
ROUNDED 60°STAGGERED (T)



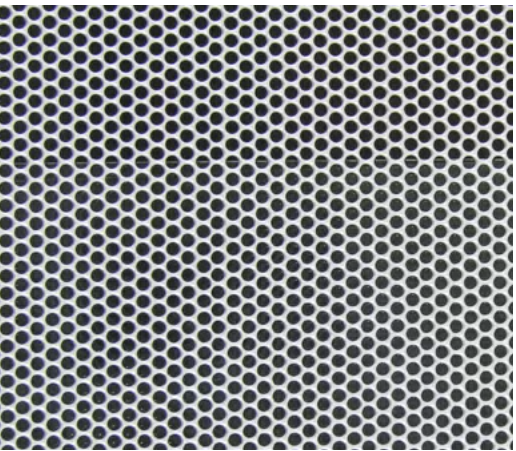
> Ø 1,2



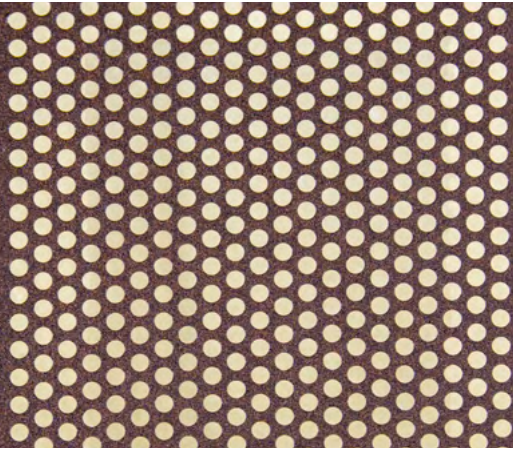
> Ø 1,5



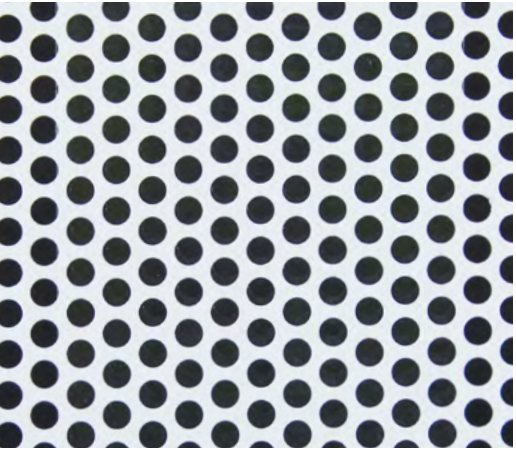
> Ø 3



> Ø 4

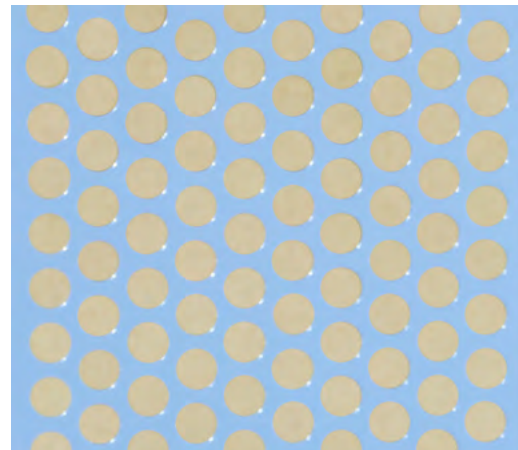


> Ø 5



> Ø 6,5

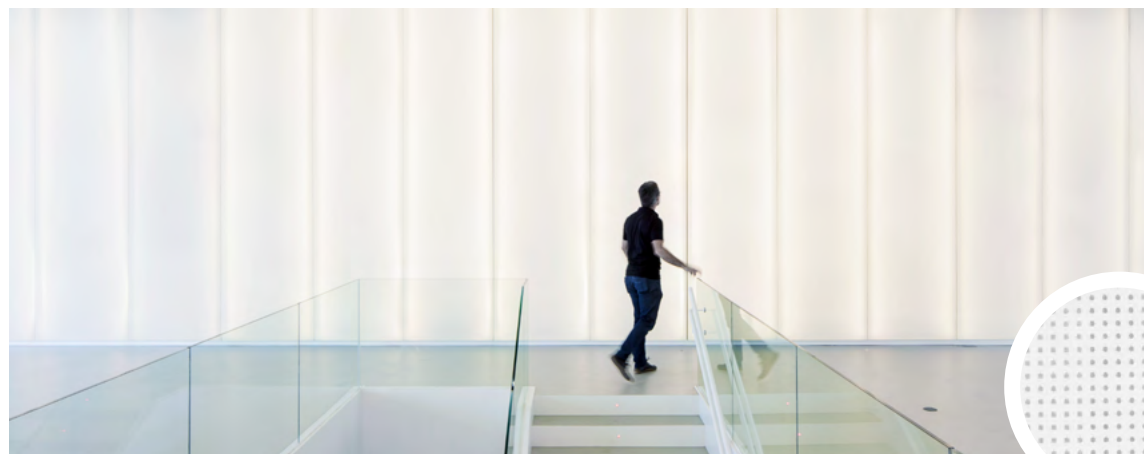
ROUNDED 60°STAGGERED (T)



> Ø 7



> Ø 20



> Rectangular Pitch > Acoustic Isolation

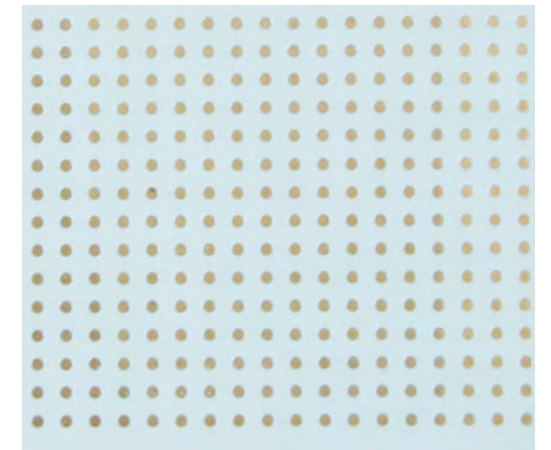


> 60°Staggered (T) > Enclosure

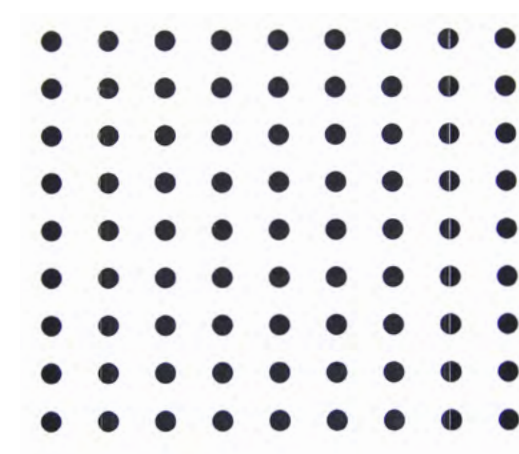
ROUNDED RECTANGULAR PITCH 60° (U)



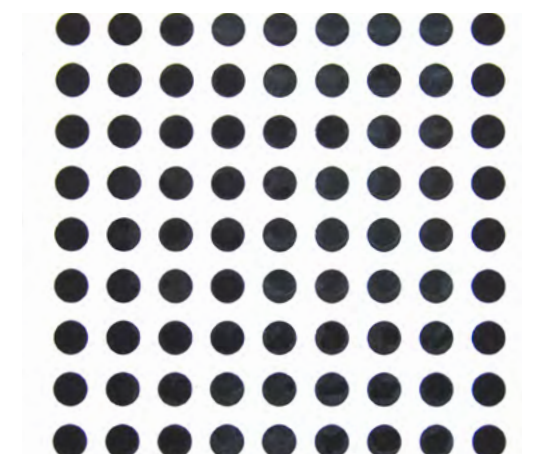
> Ø 1,5



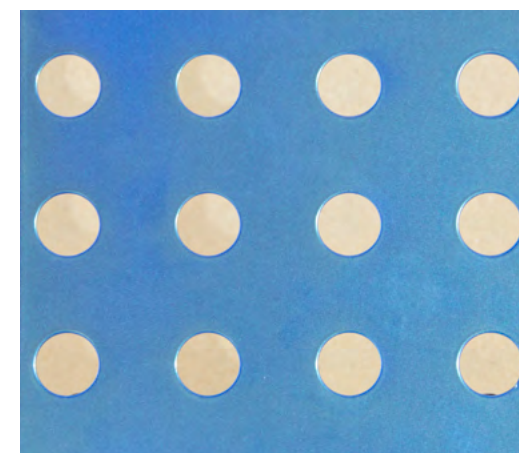
> Ø 2



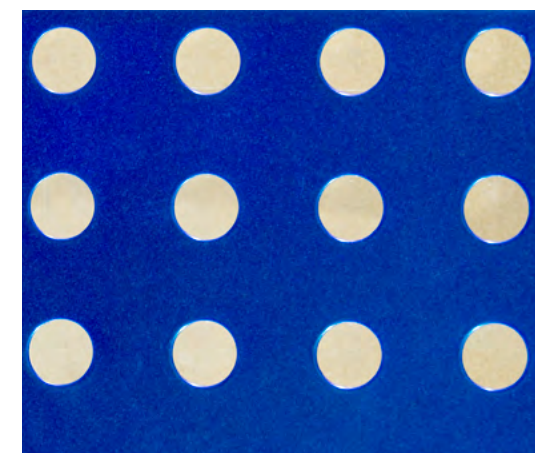
> Ø 6



> Ø 10

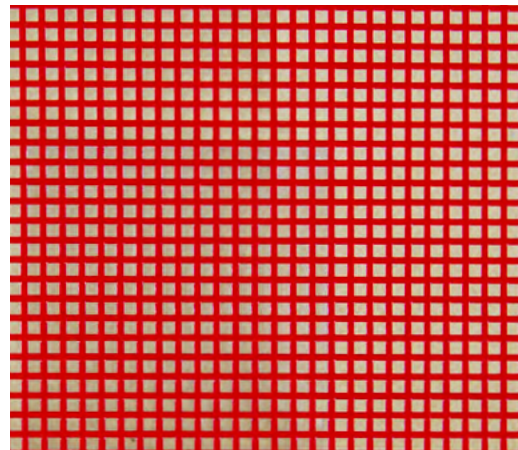


> Ø 18

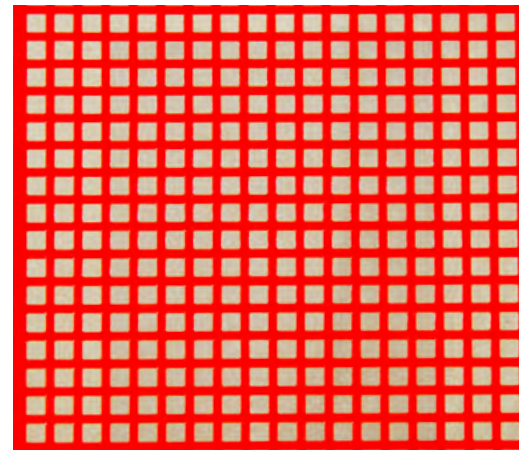


> Ø 20

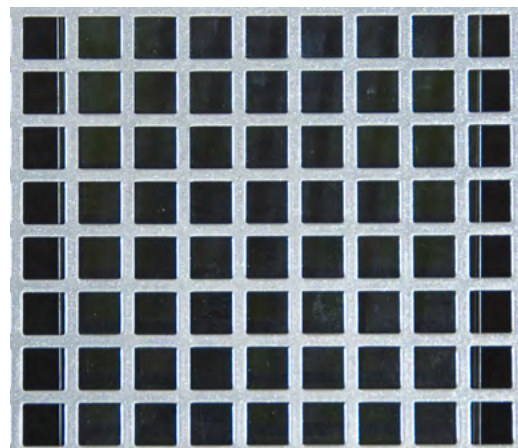
SQUARE PERFORATION



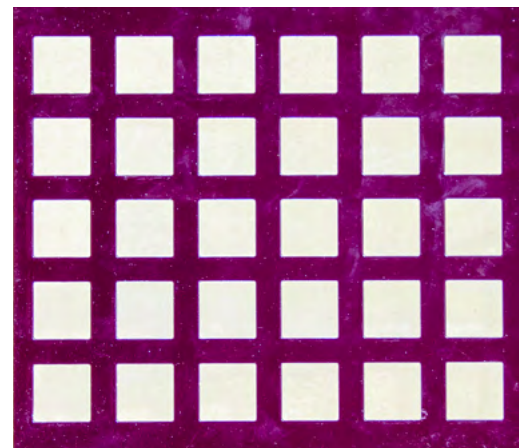
> □ 4



> □ 5



> □ 10

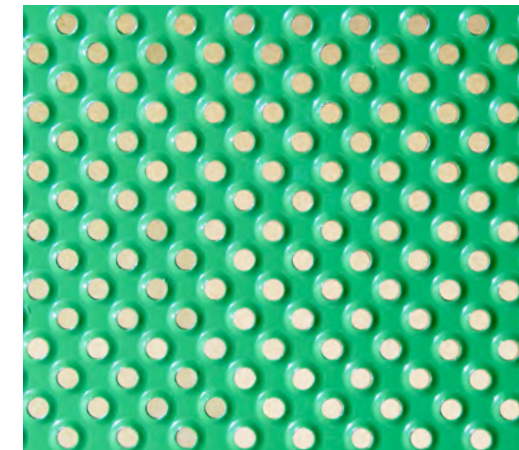


> □ 18



> Square Perforation > House Fence

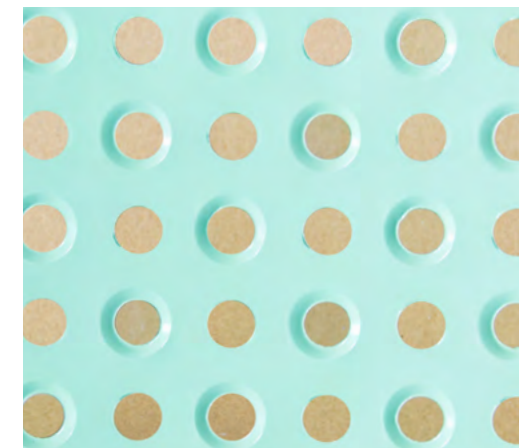
FLARED PERFORATION



> RAS 7



> RAS 8 + R 8



> RAS 15 + R 15

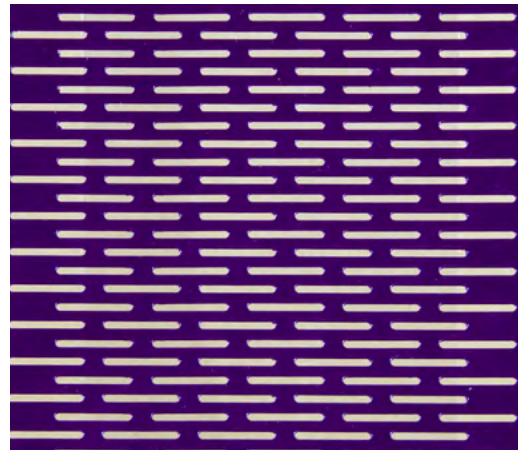


> RAD 20

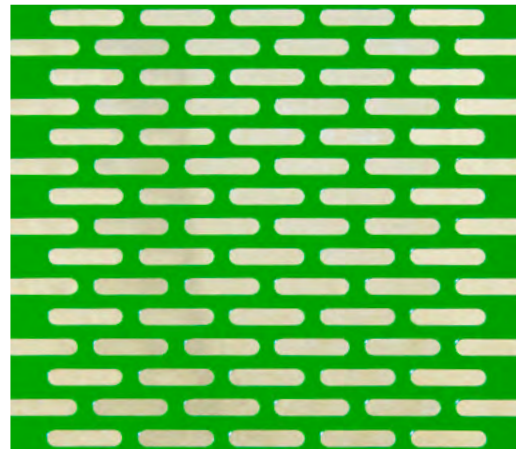


> Flared Perforation > Non-slip surface

ROUND END SLOTS



> LR 20 X 2

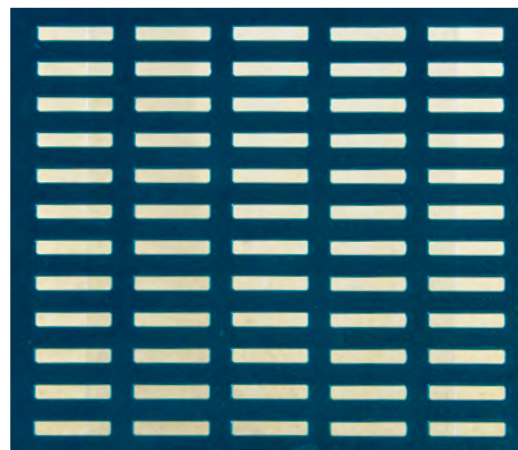


> LR 20 X 4



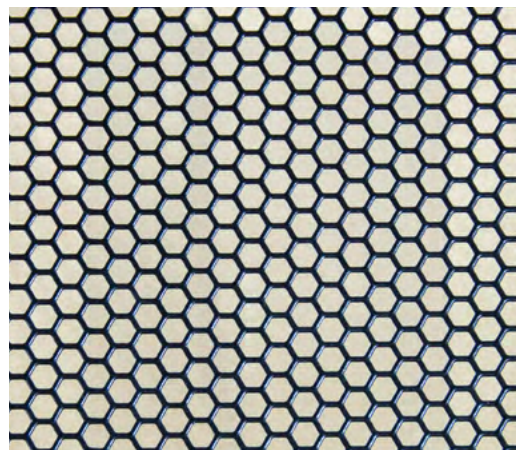
> Round end slots > Ventilated Façade

SQUARE END SLOTS



> LC 4 X 20

HEXAGONAL PERFORATION



> HEX 6,5



> Square end slots > Vandalproof design



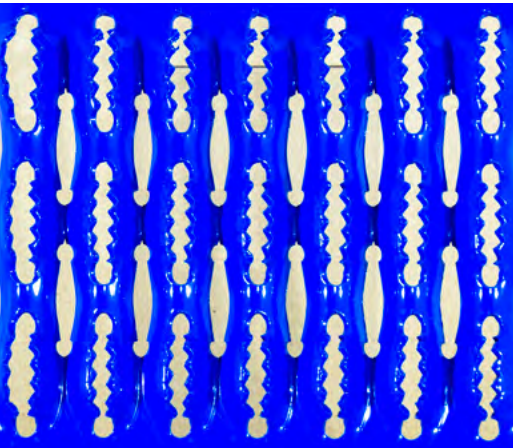
> Square end slots > Vandalproof design

SPECIALS PERFORATIONS

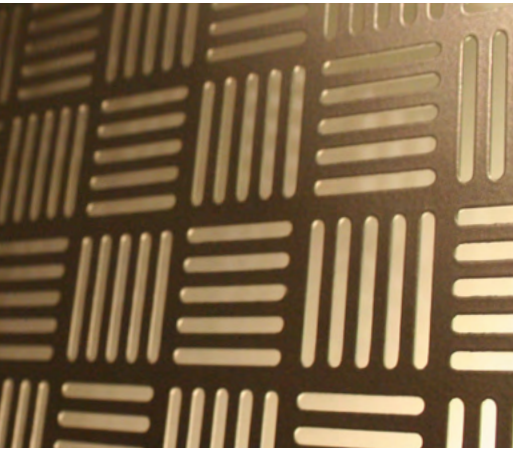
SPECIALS PERFORATIONS



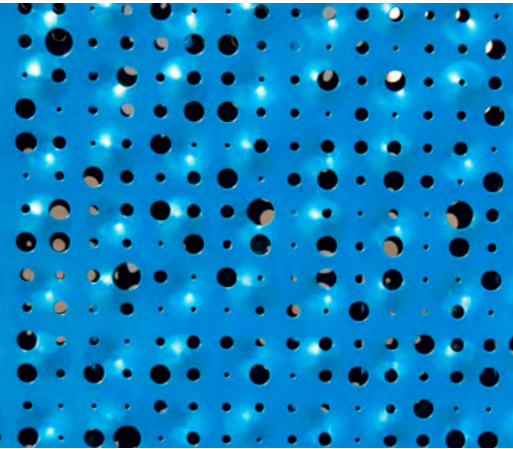
> RASPA



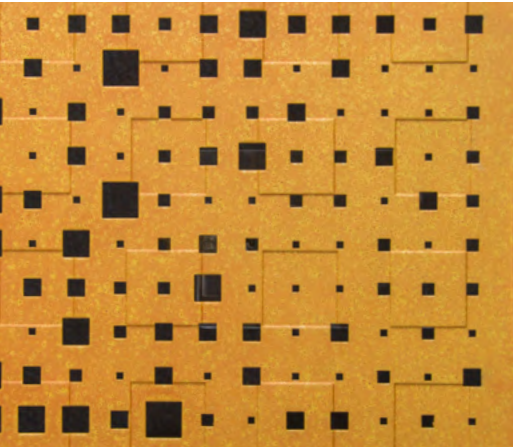
> IMARBLOCK



> AJEDREZ



> SPLASH

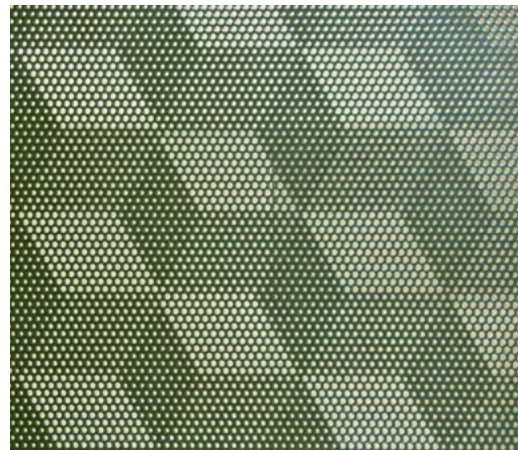


> PIXEL



> MOTION

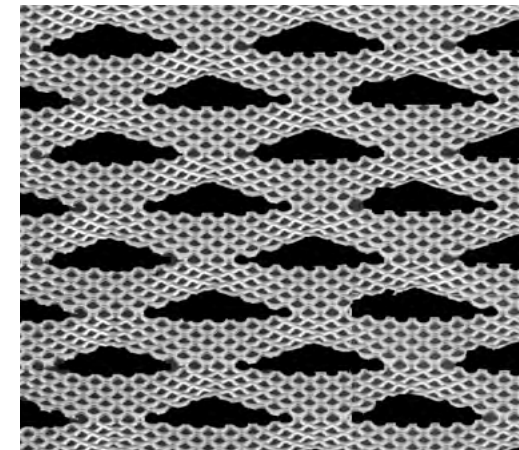
SPECIALS PERFORATIONS



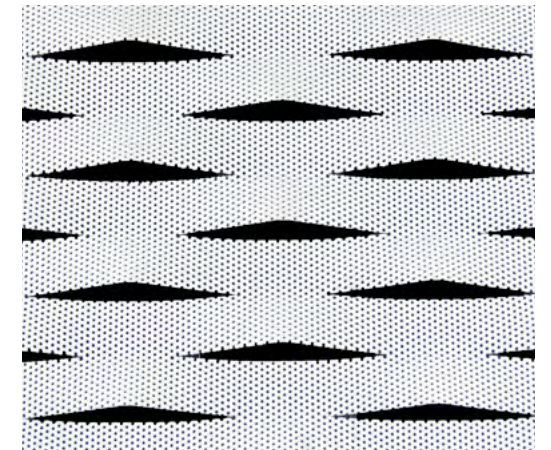
> PATTERN



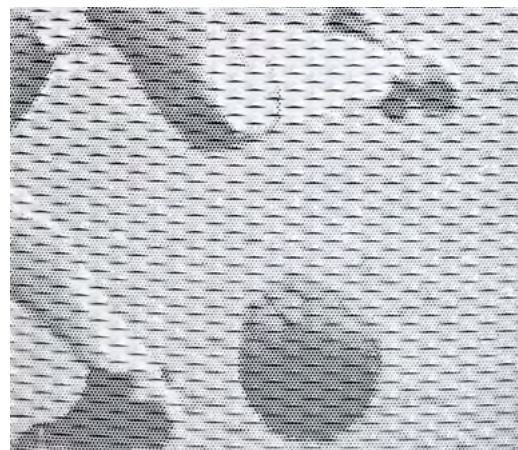
> TEXT PERFORATION



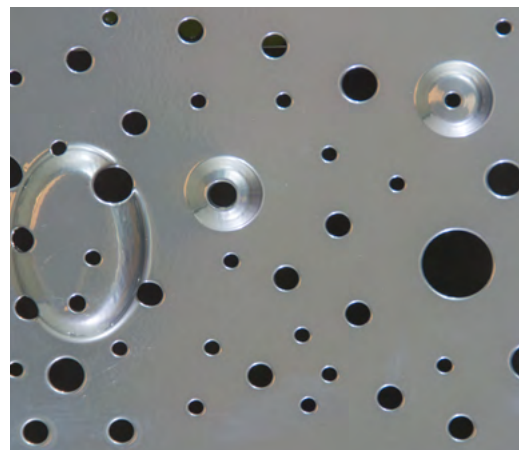
> EXPANDED+ EXPANDED



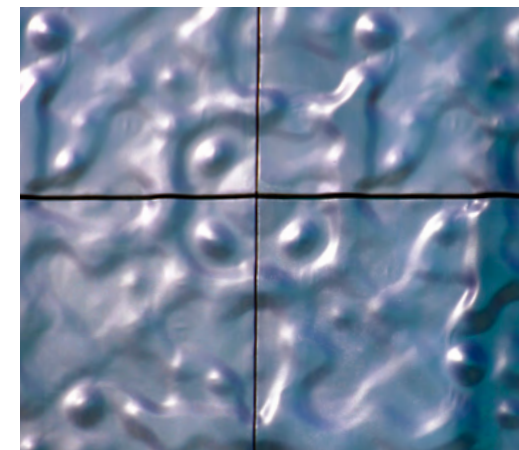
> PERFORATED + EXPANDED



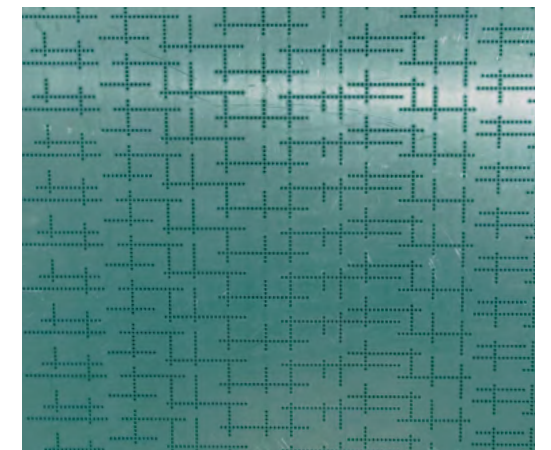
> FIGURATIVE IMAGE



> PERFORATED + EMBOSSED



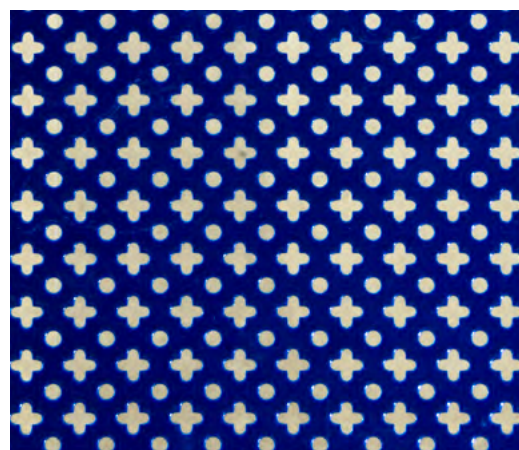
> AQUA



> MATRIX



> D 1000



> DECORATIVE



> Aqua > Metal Cladding > Aesthetic

SPECIALS APPLICATIONS



> Splash > Vandalproof door



> Motion > xxxxx



> Imarblock > Thermal Insulation



> Pixel > Industrial Shelving

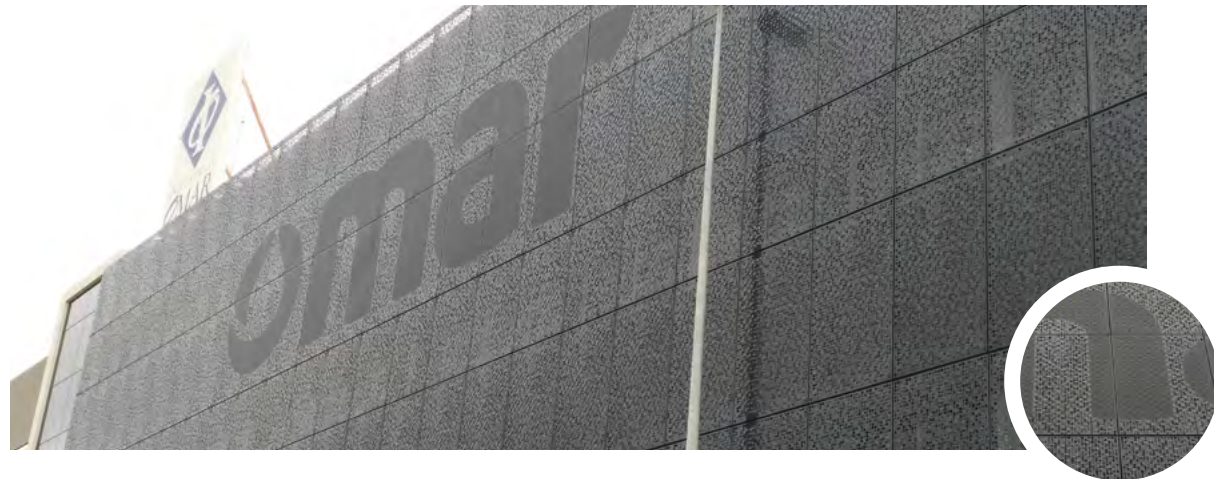


> Decorative > Metal Fence > Vandalproof design

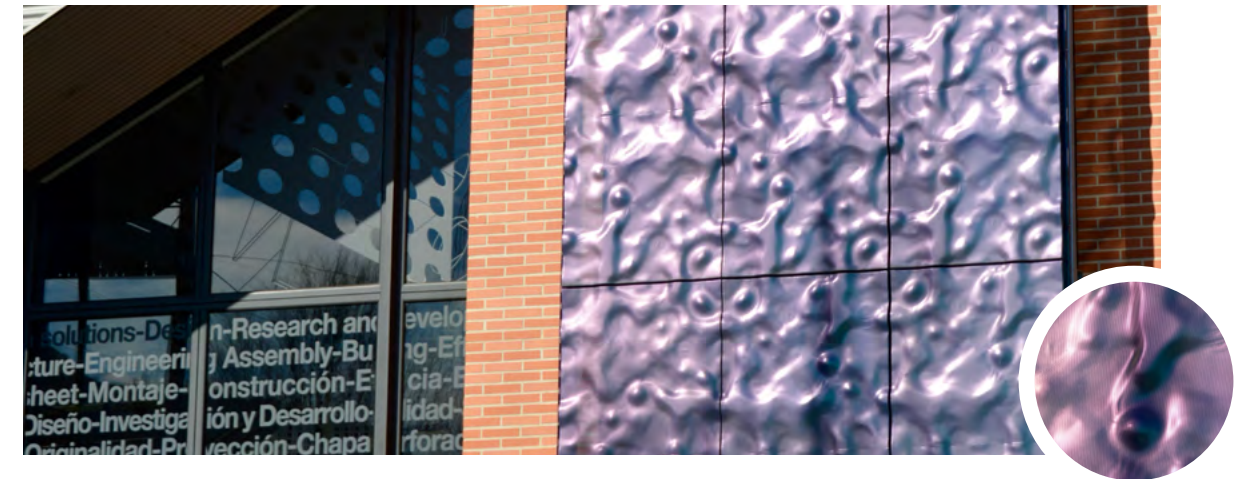


> Figurative Image > Ventilated Façade

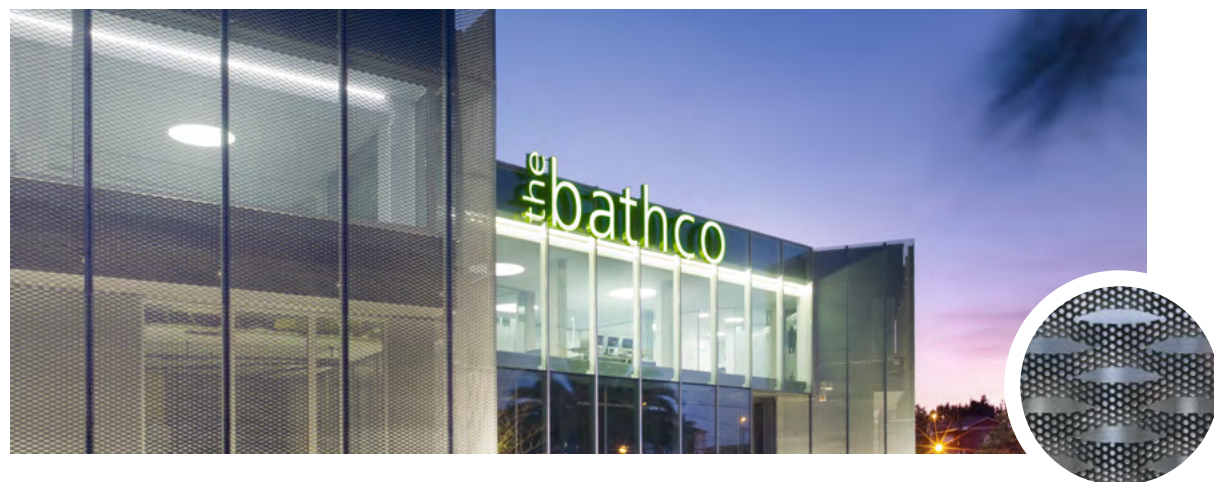
SPECIAL APPLICATIONS



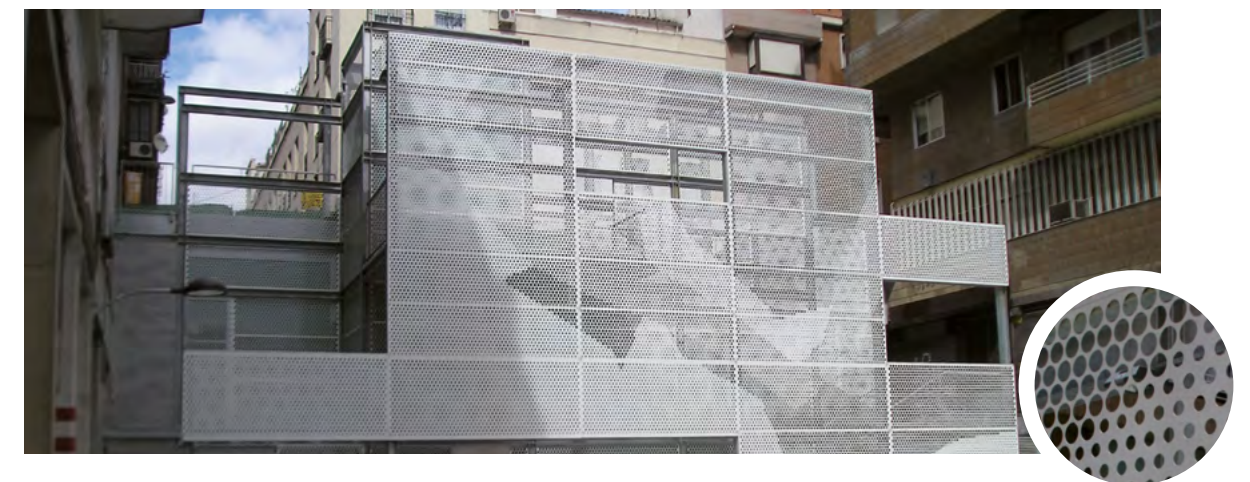
> Splash + Branding > Office Building Façade



> Aqua > Ventilated Façade



> Perforated + Expanded > Ventilated Façade



> Image Perforation > Enclosure



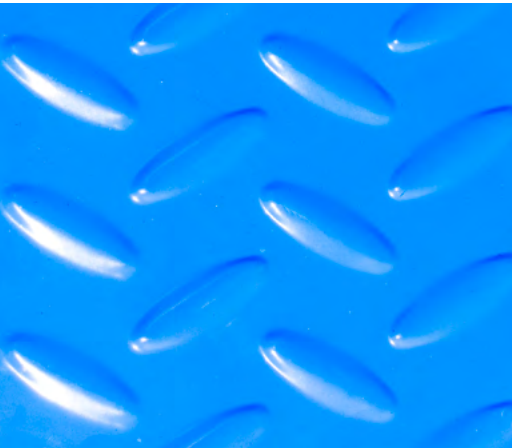
> Perforated + Embossed > Car Park Cladding



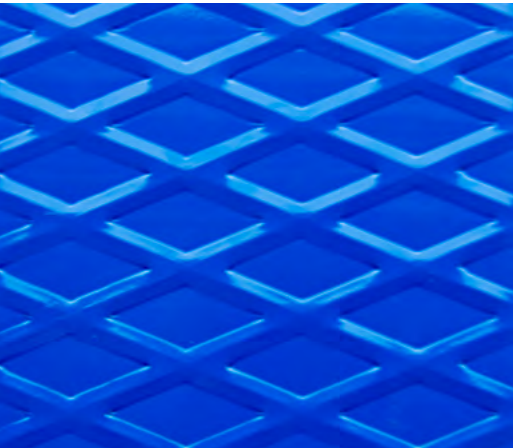
> Pattern > Facade Branding

EMBOSED APPLICATIONS

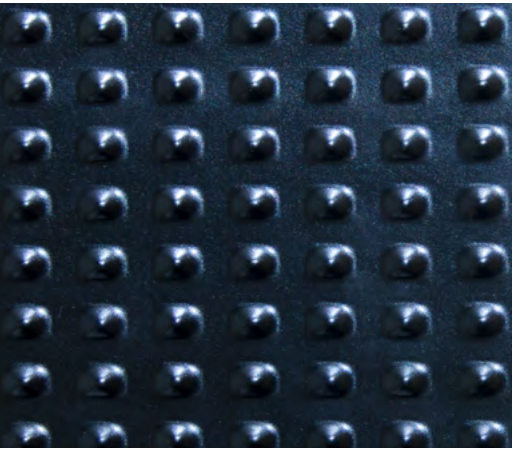
EMBOSED APPLICATIONS



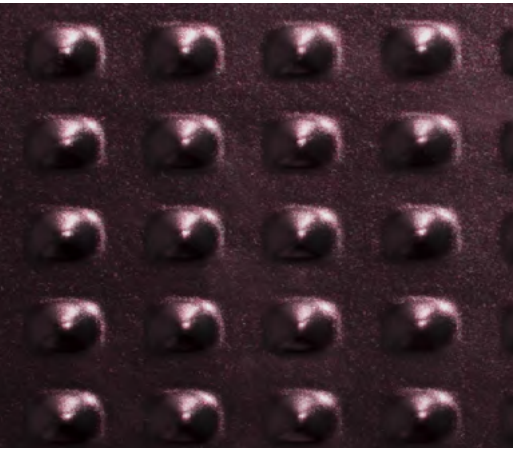
> L2



> L6



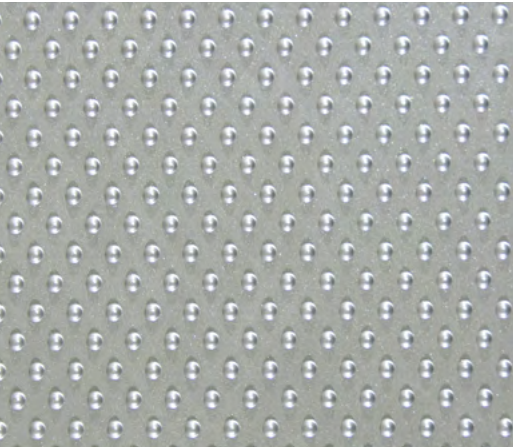
> PDE 7



> PDE 14

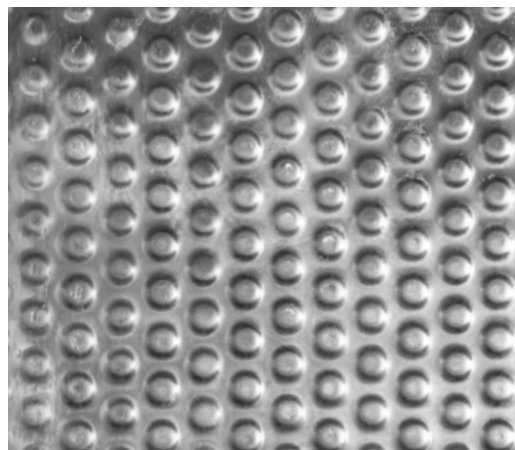


> PDE 20



> RE 3

EMBOSED APPLICATIONS



> RE 6



> ROE



> Embossed > Aesthetic



> Estampado > Ventilated Façade



IMAR ▶



Headquarters

Pol. Ind. Granada, AB1
48530 - Ortuella - Spain
T +34 944 970 111
F +34 944 970 304

Production Plants

Pol. Ind. Bayas, P40 - 09200
Miranda de Ebro - España
Pol. Ind. Granada, AB1 - 48530
Ortuella - Spain

IMAR 
www.imarsa.com
imar@innometalgroup.com

